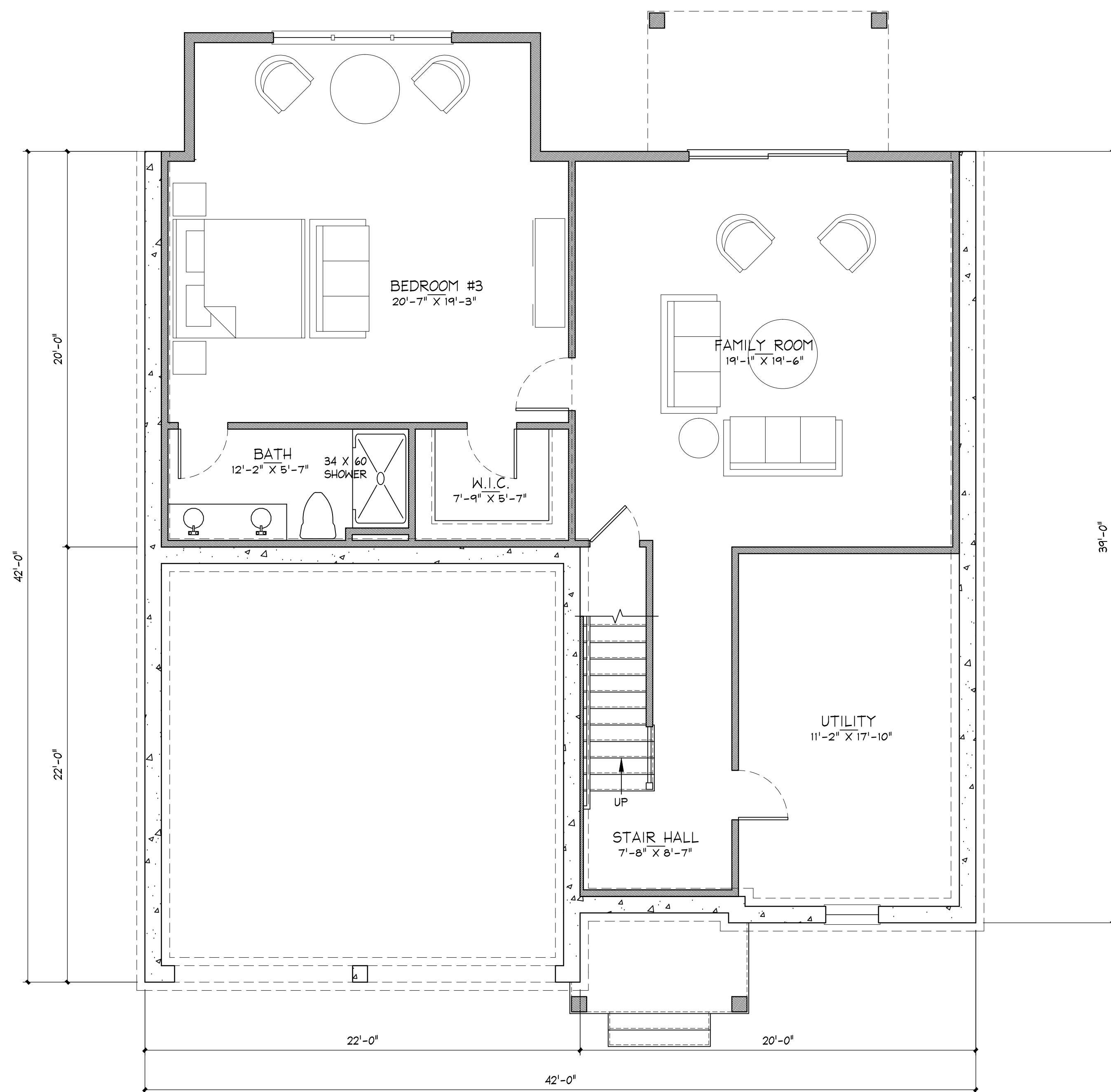


FINISHED BASEMENT OPTION "A"

1/4" = 1'-0" FINISHED BASEMENT
792 SF



FINISHED BASEMENT OPTION "B"

1/4" = 1'-0" FINISHED BASEMENT
1019 SF

Unit A

Center & Main

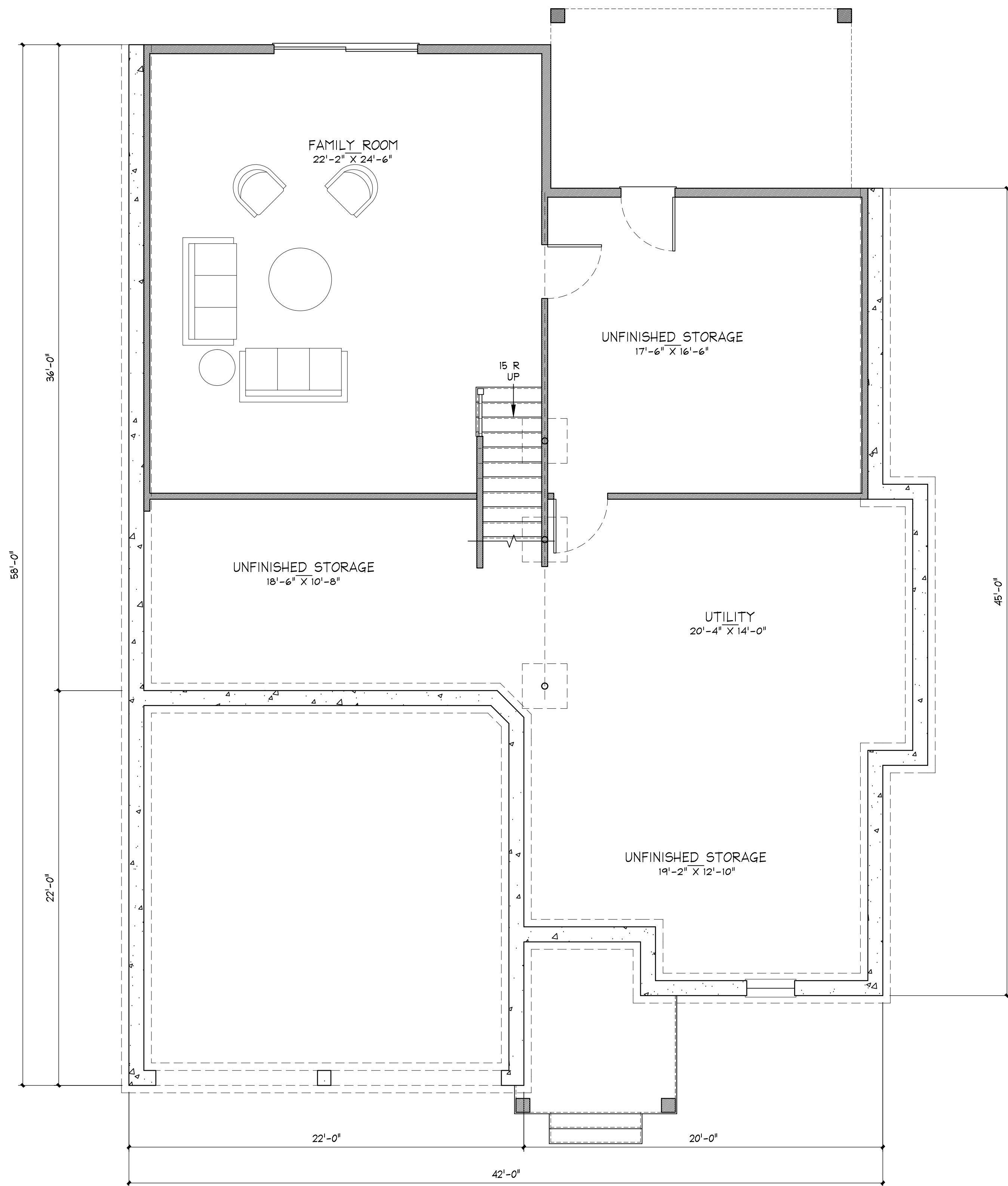
Concord, MA

October 25, 2018

The MZO GROUP
DESIGNERS ■ ARCHITECTS ■ PLANNERS
IN THE *MIQUELLE* TRADITION

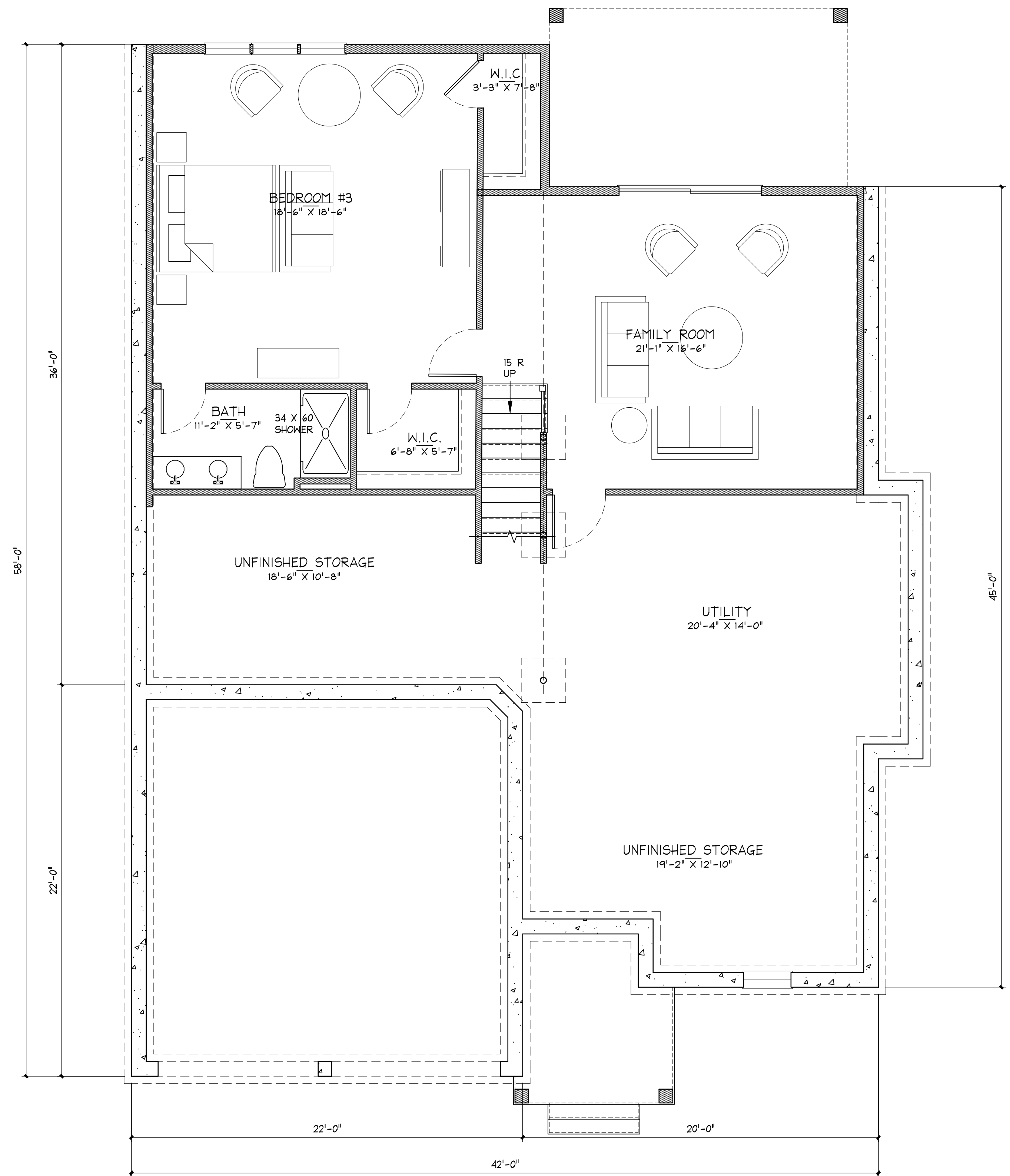
335 Main Street, Suite 201 ■ Stoneham, Massachusetts 02180
Voice: 781-279-4446 ■ Fax: 781-279-4448 ■ E-Mail: mzo@mzogroup.com ■ www.mzogroup.com

© COPYRIGHT 2018 - MZO ARCHITECTURAL GROUP, INC. OWNS THE COPYRIGHT IN THIS DOCUMENT. NO REPRODUCTION OR OTHER USE IS ALLOWED WITHOUT THE EXPRESS WRITTEN CONSENT OF MZO ARCHITECTURAL GROUP, INC.



FINISHED BASEMENT OPTION "A"

1/4" = 1'-0"
FINISHED BASEMENT
551 SF



FINISHED BASEMENT OPTION "B"

1/4" = 1'-0"
FINISHED BASEMENT
860 SF

Unit B

Center & Main

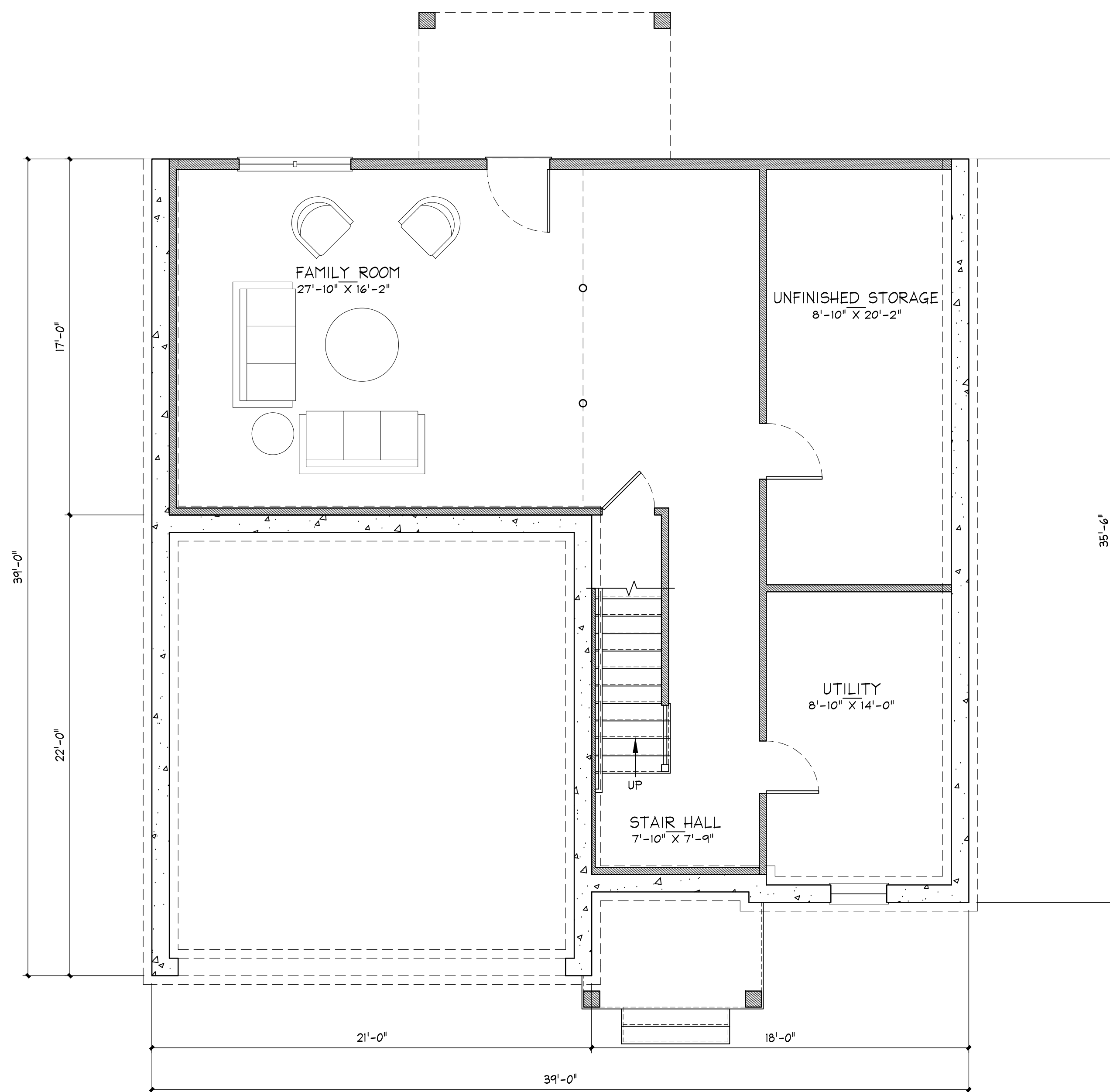
Concord, MA

October 25, 2018

The MZO GROUP
DESIGNERS ■ ARCHITECTS ■ PLANNERS
IN THE *MIQUELLE* TRADITION

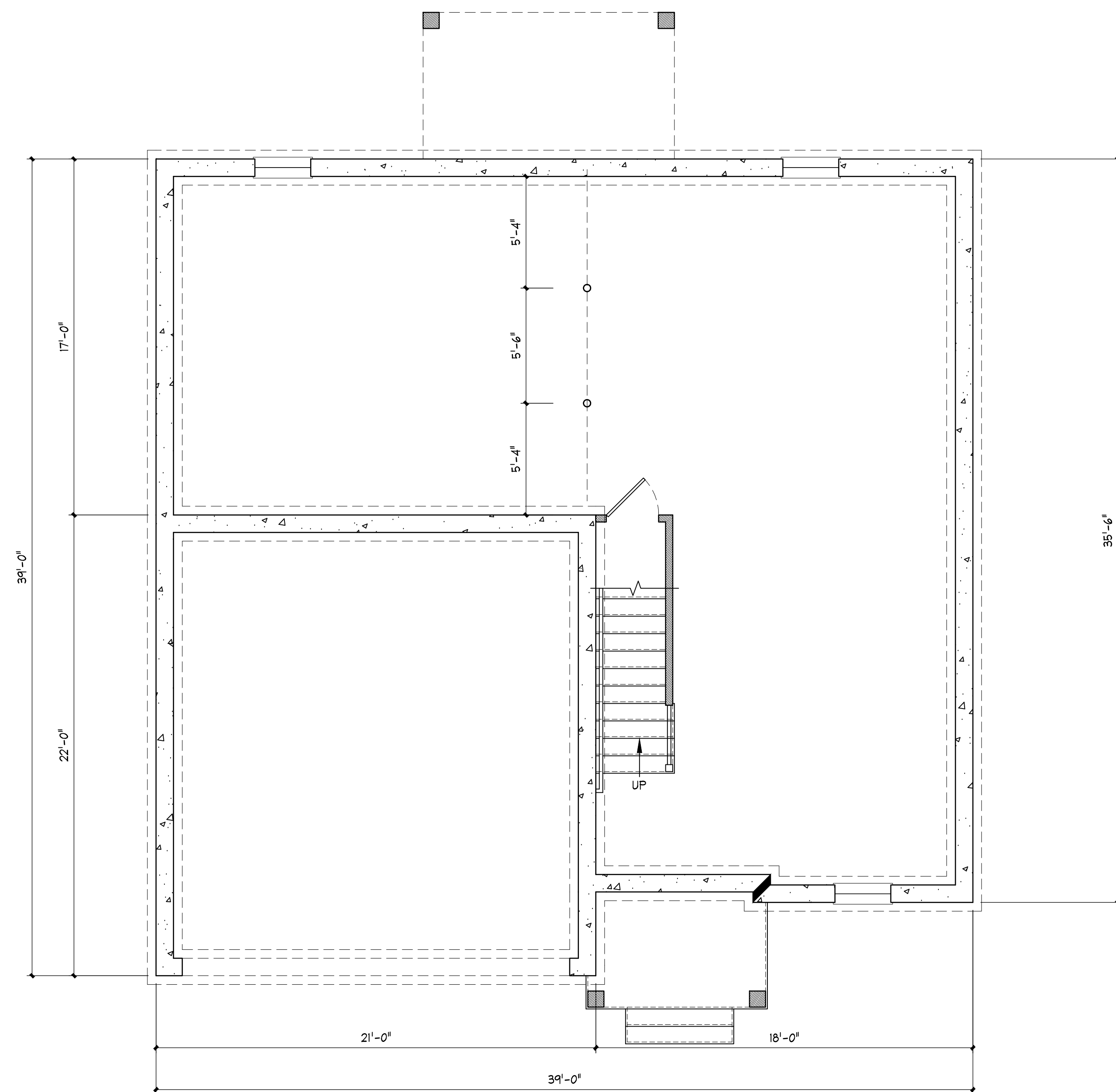
335 Main Street, Suite 201 ■ Stoneham, Massachusetts 02180
Voice: 781-279-4446 ■ Fax: 781-279-4448 ■ E-Mail: mzo@mzogroup.com ■ www.mzogroup.com

© COPYRIGHT 2018 - MZO ARCHITECTURAL GROUP, INC. OWNS THE COPYRIGHT IN THIS DOCUMENT. NO REPRODUCTION OR OTHER USE IS ALLOWED WITHOUT THE EXPRESS WRITTEN CONSENT OF MZO ARCHITECTURAL GROUP, INC.



FINISHED BASEMENT OPTION

1/4" = 1'-0" FINISHED BASEMENT
584 SF



UNFINISHED BASEMENT

1/4" = 1'-0"

Unit C

Center & Main

Concord, MA

October 25, 2018

The MZO GROUP
DESIGNERS ■ ARCHITECTS ■ PLANNERS
IN THE *MIQUELLE* TRADITION

335 Main Street, Suite 201 ■ Stoneham, Massachusetts 02180
Voice: 781-279-4446 ■ Fax: 781-279-4448 ■ E-Mail: mzo@mzogroup.com ■ www.mzogroup.com

© COPYRIGHT 2018 - MZO ARCHITECTURAL GROUP, INC. OWNS THE COPYRIGHT IN THIS DOCUMENT.
NO REPRODUCTION OR OTHER USE IS ALLOWED WITHOUT THE EXPRESS WRITTEN CONSENT OF MZO ARCHITECTURAL GROUP, INC.