

CONNECT WITH US!

For updates on Town news, events, and the community, follow us on social media!

Concord Police



@ConcordMAPD

Town of Concord



@TownofConcordMA



Sign up for Town Notifications,
Emergency Alerts and General Alerts.
www.concordma.gov/list.aspx

www.brucefreemanrailtrail.org



Connecting Lowell, Chelmsford,
Westford, Carlisle, Acton, Concord,
Sudbury, and Framingham

RAIL TRAIL ETIQUETTE

Users should stay to the
right side of trails.



Users must stop at all
stop signs.



Trails are shared use paths.
Cyclists should slow down for
pedestrians and be willing to ride
behind them without following
excessively close, and only pass
when the path is clear and there is
no oncoming traffic.



Cyclists should not follow other
bicycles closely and should leave
at least 6 feet of space, tire to tire.



Please alert others when passing.



Users need to be constantly aware
of surface conditions,
including the potential for
obstacles and loose material
to be on the path.



PEDESTRIAN & BICYCLE SAFETY



Concord Police Department
219 Walden Street
Concord, MA 01742

(978)318-3400
www.concordma.gov

BICYCLE LAWS

Bicyclists **must** obey all of the same traffic laws as motorists, including stopping for **red lights**, and **stop signs**, riding on the right side of the road, and yielding to pedestrians in cross-walks.

Bicyclists, unlike motorists, may pass on the right side of the roadway, and use hand signals to indicate their intentions to turn or stop.

Bicycles may ride two abreast when they can do so without obstructing faster traffic.

No child under the age of 1 may be carried on a bicycle. Passengers between 1 and 4 years of age, or weighing forty pounds or less must be carried in a bay seat. Riders and passengers 16 years of or younger **must** wear a helmet.

When riding at night, all bicyclists must use a white light on the front, a red light or reflector on the rear, and either ankle or pedal reflectors.

Crashes involving bicycles must be reported to the police if there is a personal injury and/or damage that exceeds \$100.

Bicycles may use all roadways, except limited access highways. Even when bike lanes are present, a bicyclist may use any part of the roadway as needed to pass another bicycle on the left, to stay four feet away from parked cars, to avoid a pothole or other road hazard, or to make a left turn, etc.

PEDESTRIAN LAWS

Pedestrians should never enter a roadway used by motorists or bicycles without first checking for traffic. Look for traffic: some bicycles and motor vehicles operate silently.

Pedestrians **must** obey all traffic control signals and the instructions of police officers directing traffic.

Traffic control Signals:

- **"Walk"** - pedestrians may proceed across the roadway.
- **Flashing "Don't Walk"** - no pedestrian shall start to cross the roadway, but any pedestrian who has partially completed crossing may continue.
- **Steady "Don't Walk"** - no pedestrian shall start to cross the roadway.

Pedestrians must use crosswalks to cross a roadway if they are within 300 feet.

Pedestrians must yield the right of way to funeral processions and authorized emergency vehicles, regardless of traffic control signs.

West Concord Junction Park

Please dismount bicycles and walk through Junction Park

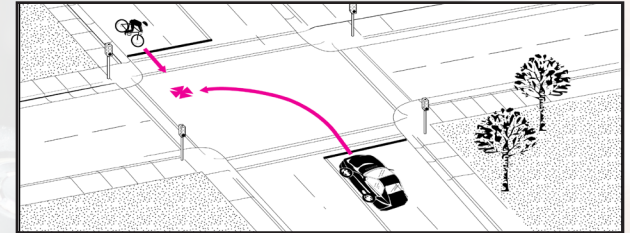
MOTORIST LAWS

Motorists must yield to a pedestrian in a crosswalk on the same half of the road or approaching from the opposite half of the road when within 10 feet of the motorist's lane.

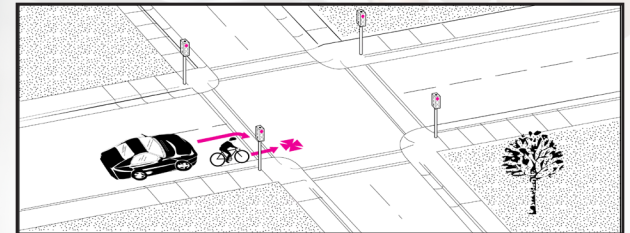
Motorists may not block a crosswalk and must never pass a vehicle that is slowing or stopped for a pedestrian in a crosswalk.

Motorists may not open a car door into the path of a bicyclist or a pedestrian.

Motorists, when turning left or right, must yield to bicycles and pedestrians.



Motorists may not cut off a bicycle after passing, and must pass at a safe distance. The recommended safe distance is at least 3 feet.



Motorists may not unreasonably honk their horns at bicyclists or pedestrians.

