

Concord Fire Department

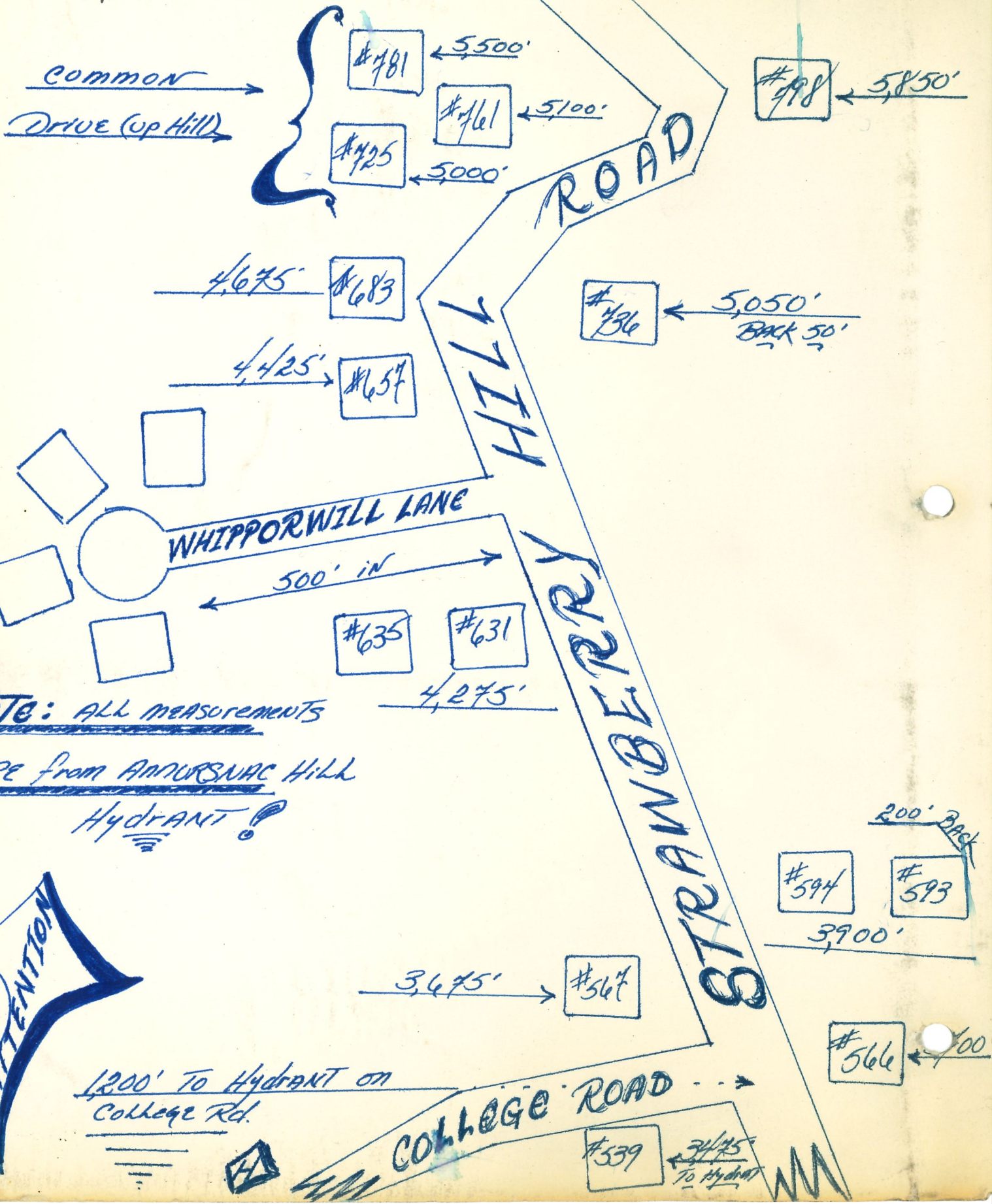


Maps - circa 1980

Drawn by two of the CFD's long-since-retired members Capt. Bruce Kidder and Firefighter Don Chase, and scanned by Firefighter Arthur St. John, these sketches provide the unique perspective of "How many feet of hose would we need?"

FICTION

MAP # 2



Note: ALL measurements
ARE FROM ANNURSNAK HILL
Hydrant

ATTENTION

1200' To Hydrant on
College Rd.



MAP #1

3,300' → #513

3,050' → #477

#463

#451

#449

545' *Right

900' *Left DIRT ROAD

#445 & #426 → #445
1,800'

#397 & #384 → #397
1,450'

#333 ← 700' back

#299 ← 1150'

600' →

#358

#280

#266

400' → Brooks School (Hydrant in yard)
← 200' →

STRAWBERRY HILL

CHOR

1000' to street

#498

3200'

800' in #460 ← 3,000'

#426 ← 1,800'

#394 ← 1,450'

#384 ← 1,250'

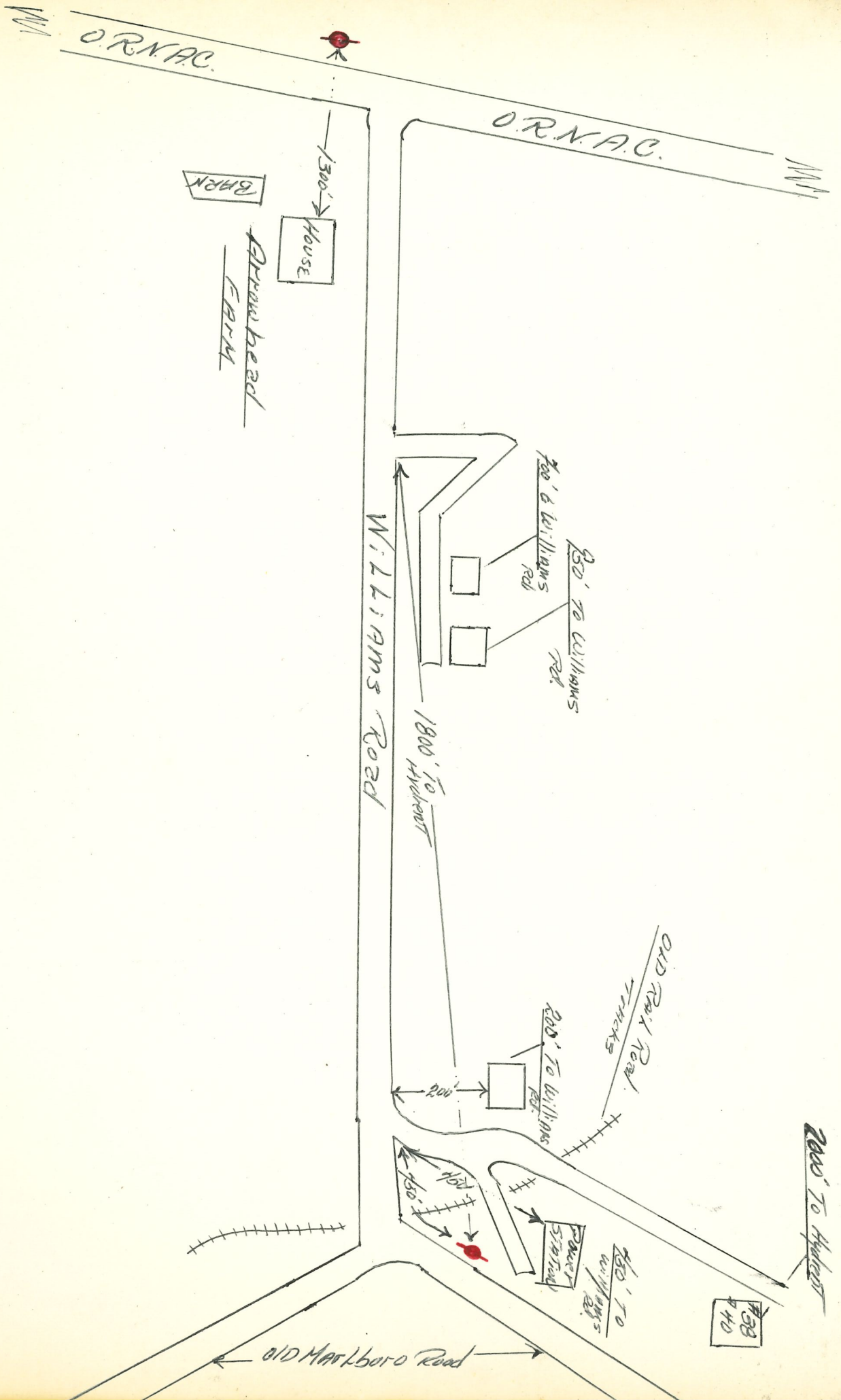
#368 ← 1,850' DIRT ROAD

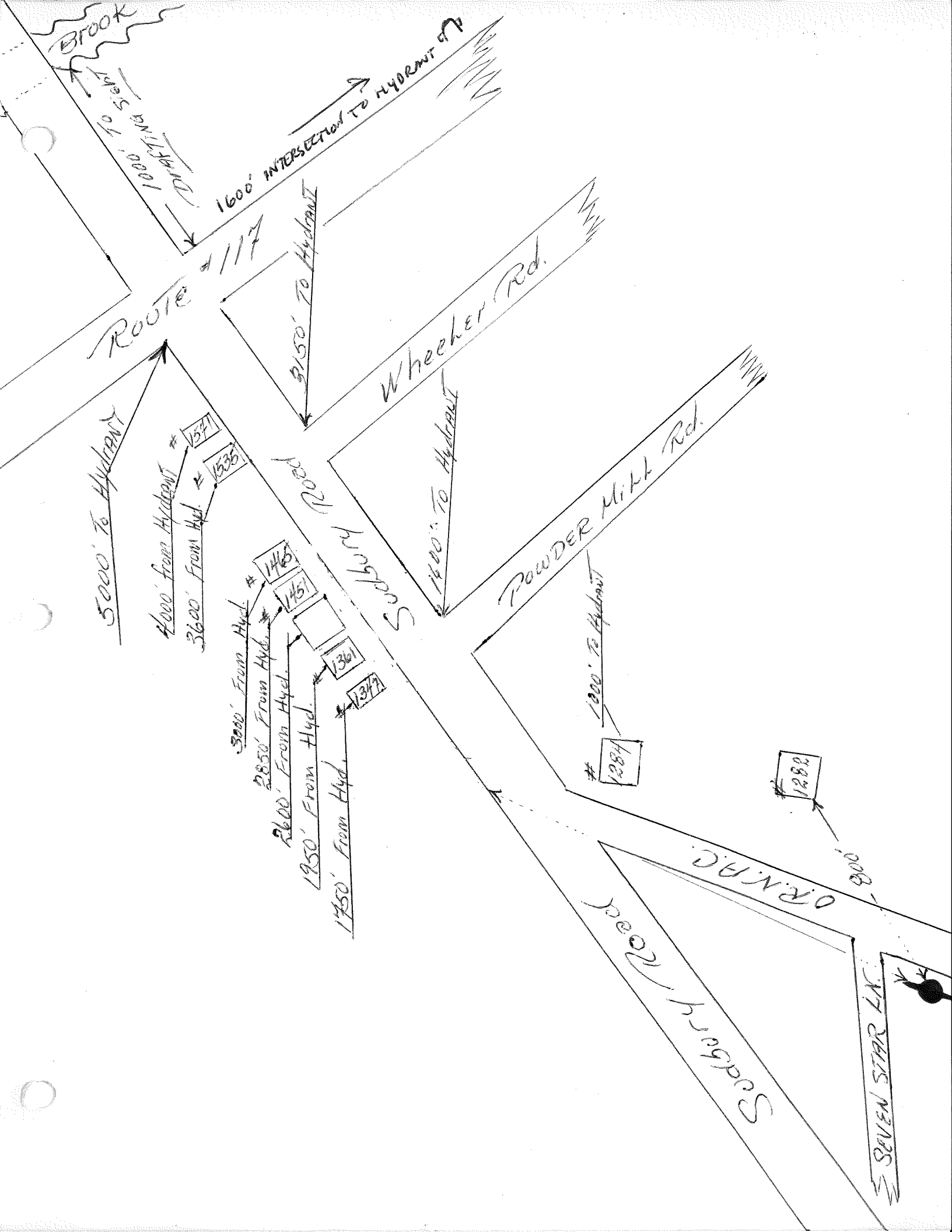
← 1,050'

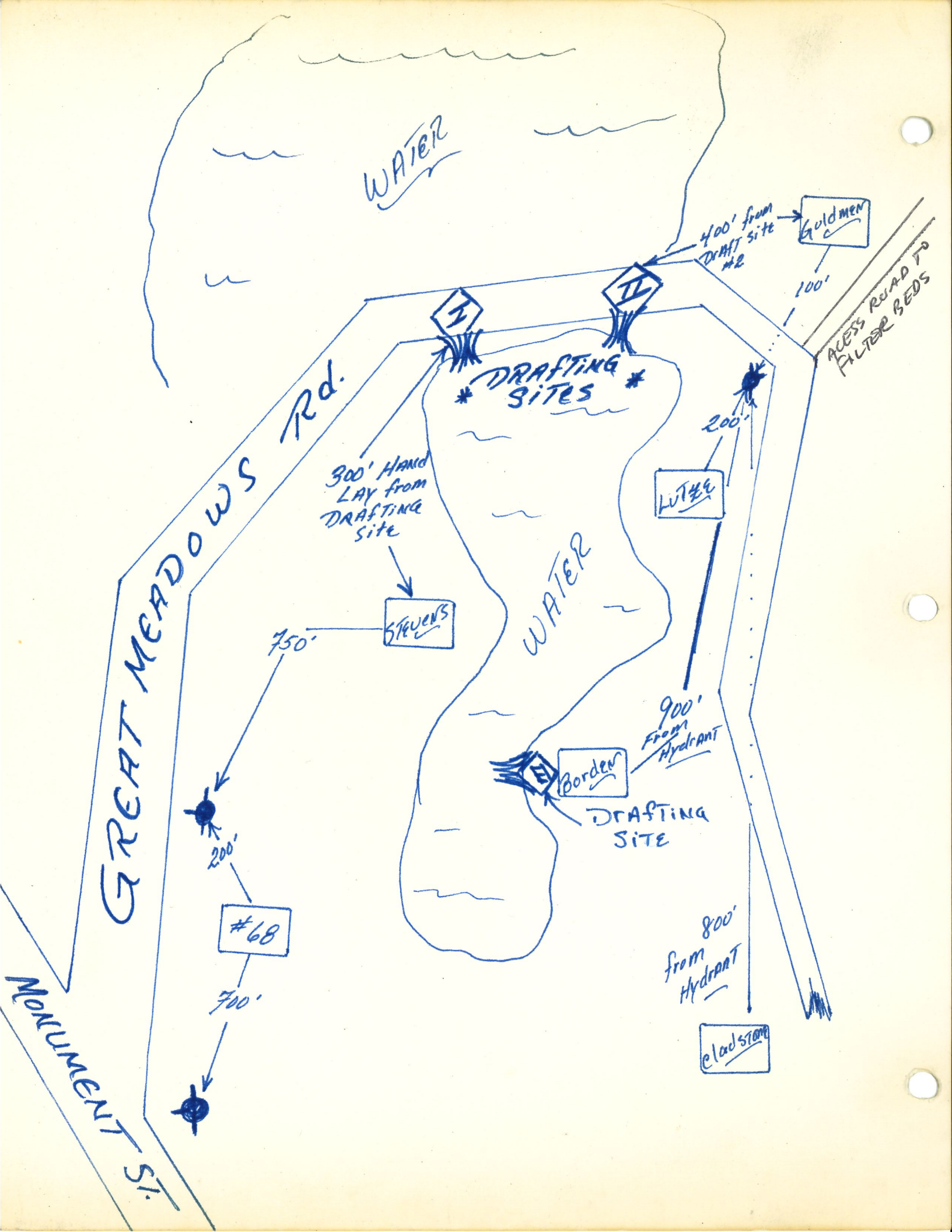


* Note: ALL MEASUREMENTS ARE FROM Hydrant

HANNERSHAC HILL ROAD







LEXINGTON ROAD

#955
#965

1150' From Hydrant
1300' From Hydrant

#1071

#1087

#49

1100' From Lincoln's Hyd.

3000' to Lincoln's Hyd.
400' to Lincoln's Hyd.

SHADYSIDE

#92
#74

1500' From Lincoln's Hydrant

#110

2100' From Lin. Hyd.

#112

1700' From Lincoln's Hyd.

#186

2500' From Lincoln's Hyd.

#219

#241

* TELEPHONE Pole w/ yellow BANDS: Relay Point LDM

R

#286

#222

#214

1000' From R R

500' R
750' R
600' R
450' R
200' R R

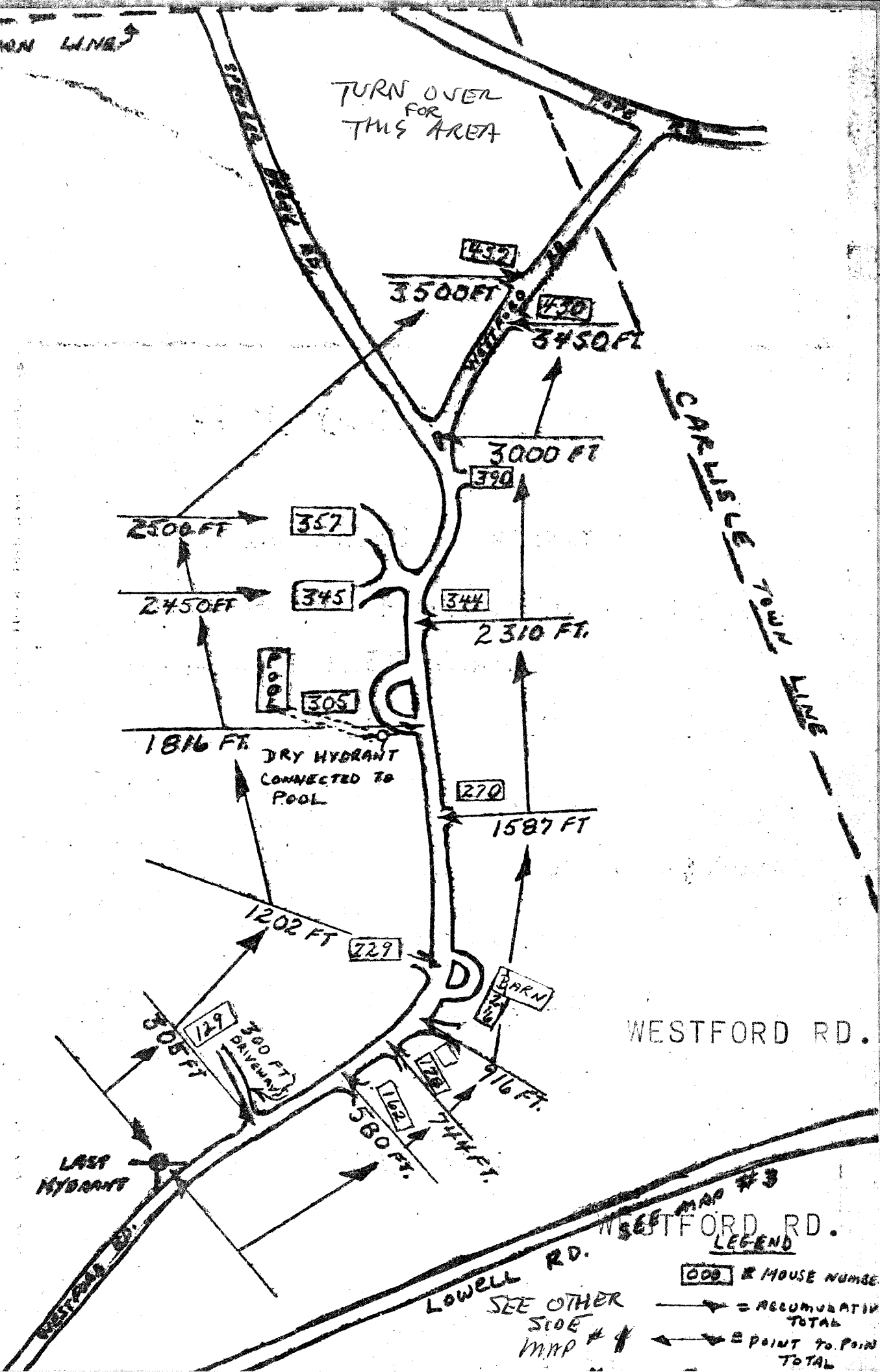
* Measurements From Relay Point

ROUTE RR (BYPASS)
Lincoln's Hyd. w/ 8" main & 80 lbs. PSI

DINCON

TOWN TOWN LINE

TURN OVER FOR THIS AREA



WESTFORD RD.

SEE MAP #3
WESTFORD RD.
LEGEND

000 & MOUSE NUMBER

→ = ACCUMULATIVE TOTAL

↔ = POINT TO POINT TOTAL

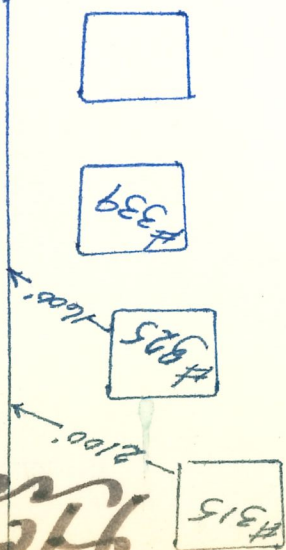
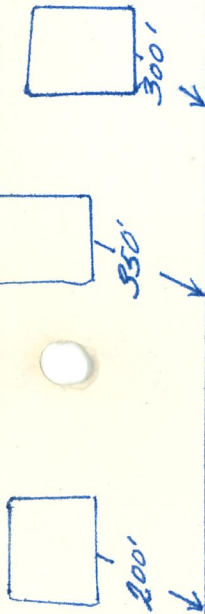
SEE OTHER SIDE MAP #4

Carlsisle

POPE Rd

SPENCER BROOK Rd

Westford Rd
(Carlsisle)



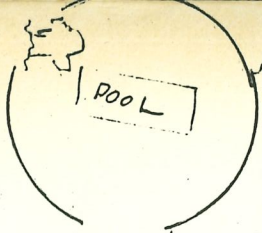
NOTE:

Closest Hydrant to Intersection BACK on Westford Rd. 3,000'

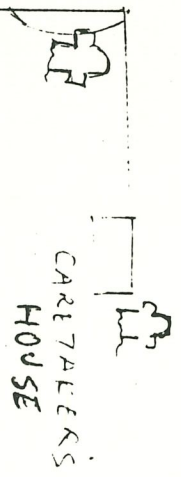
(R) Relay point (Large Diameter Hose) in front of # 944 Westford Rd.

Flex

NASHAWTUC C.C.



NASHAWTUC C.C.
MAINT. BARN

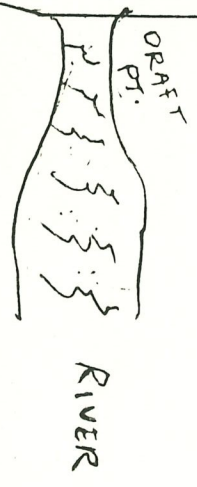
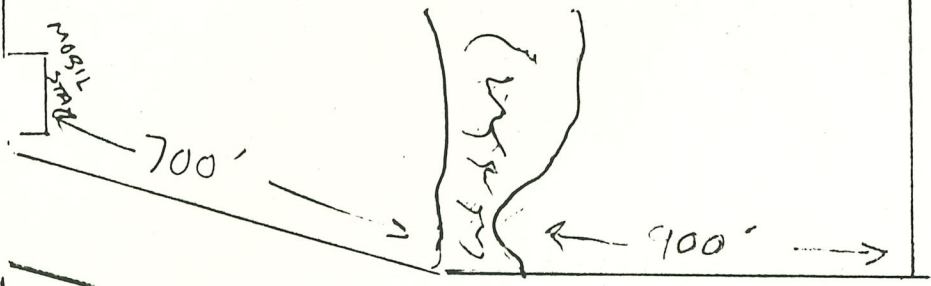


O.R.N.A.C.

AND

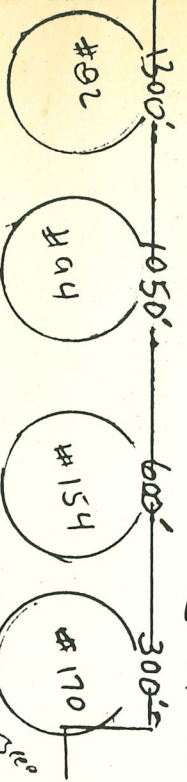
RT. 117

AREA

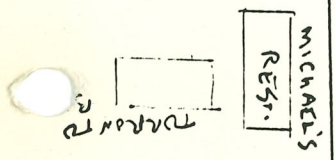


← 1600' TO INTERSECTION →

← EAST ROUTE 117 WEST →



SUBBURY RD



HINFIELD RD.

LINCOLN

.....

* ALL MEASUREMENTS
TO BEGINNING OF
FOX RUN

SANDY POND RD.

LINCOLN Hydrant

350' (±)

FOX RUN

#100'
#275

#261

#247

545'
545'

#262

125'

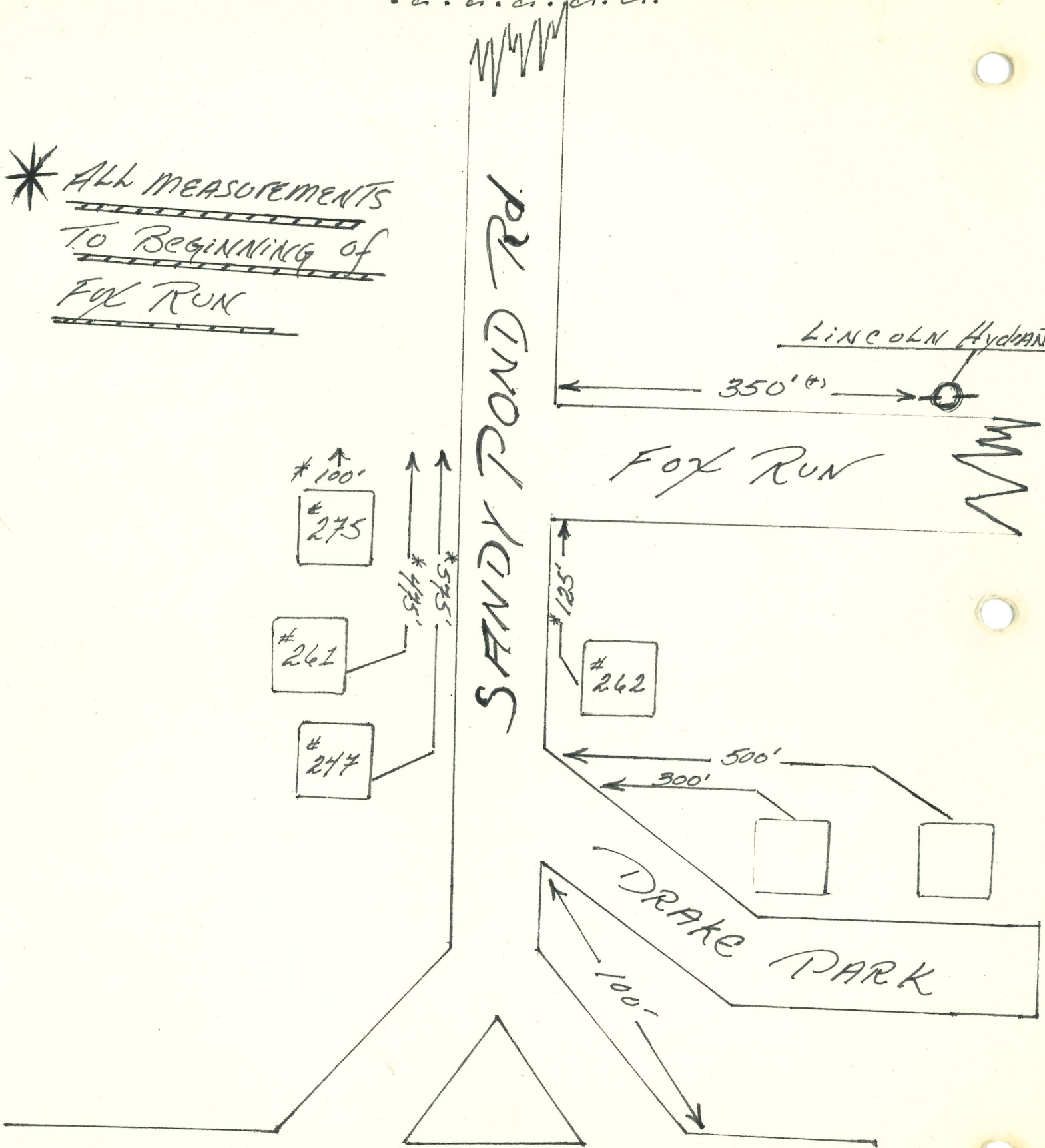
500'

300'

DRAKE PARK

100'

← ROUTE 2 EAST BOUND →



ROUTE 2 EAST

Crosby's Corner

ROUTE 2 West

*Measurements
ARE FROM DRAFT
SITE

*Measurements
ARE FROM LAST
HYDRANT

GAS STATION

950'
TO DRAFT

#646

600'
FROM DRAFT



#649

700'
TO DRAFT

#571

300'
TO DRAFT

1300'

#552

950'

#537

800'

#521

550'

#505

450'

CAMBRIDGE TURNPIKE

1150'

#558

200'
TO DRAFT

#544

950'

#510

450'

#490

225'

SANDY POND

LAST HYDRANT



393
2600' from Hydrant I

421
2850' from Hydrant I
364
2350' from Hydrant I

Relay Point for L.D.H. 

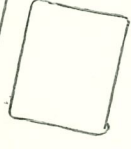
1850' from Hydrant #2
116
700' from Hydrant #1
102
700' from Hydrant #1
82
100'
250'
700'

1675' from Hydrant II
850' from Hydrant II
575' from Hydrant # II
154
395'
850'
1675'
121
121
II
I

1680' from Hydrant II
699
1680'

ESTABROOK Road

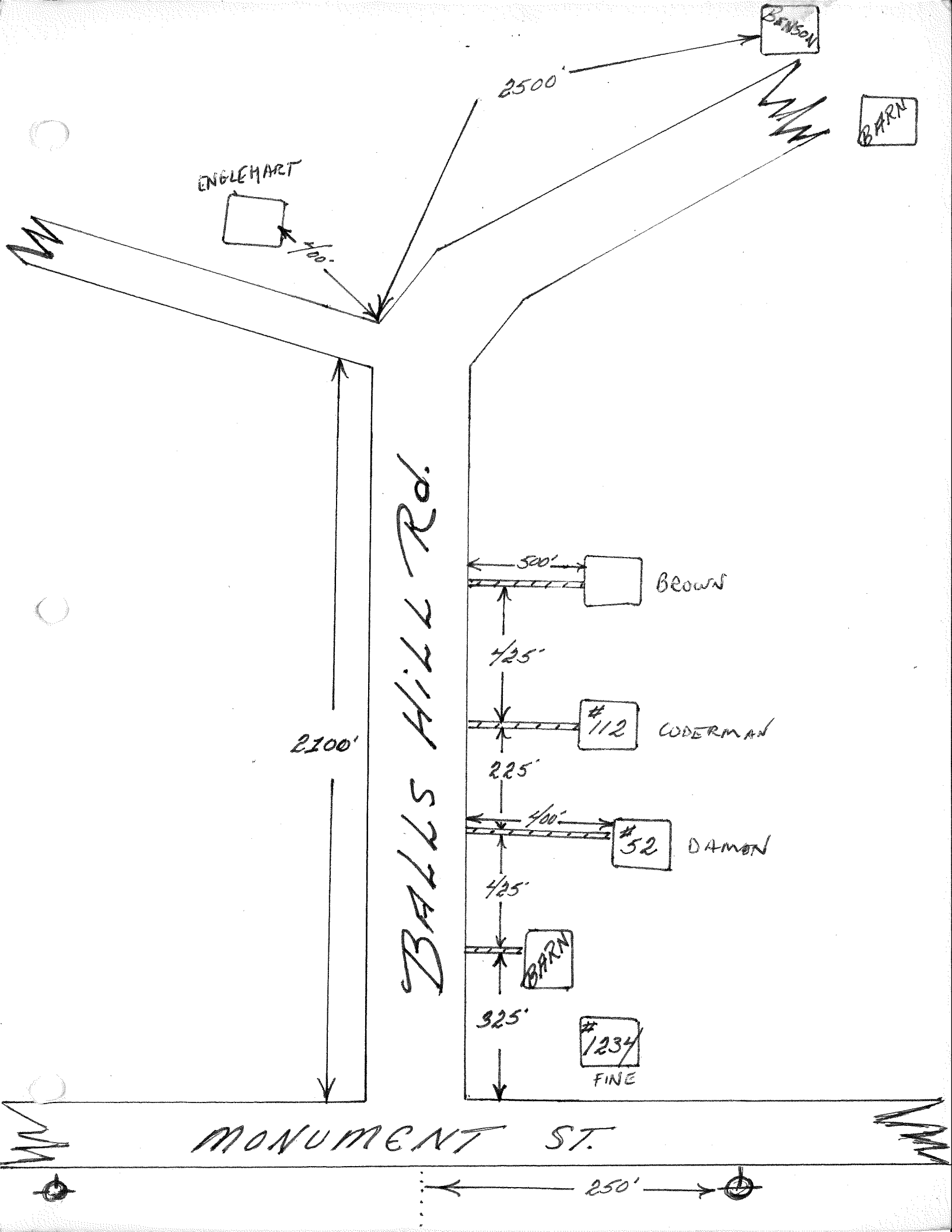
BARNES Hill Road



81

121





ENGLEHART



400'

2500'

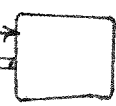
BANKSON

BARN

BALLS HILL RD.

2100'

500'



BROWNE

425'

#112

CODERMAN

225'

400'

#52

DAMON

425'

BARN

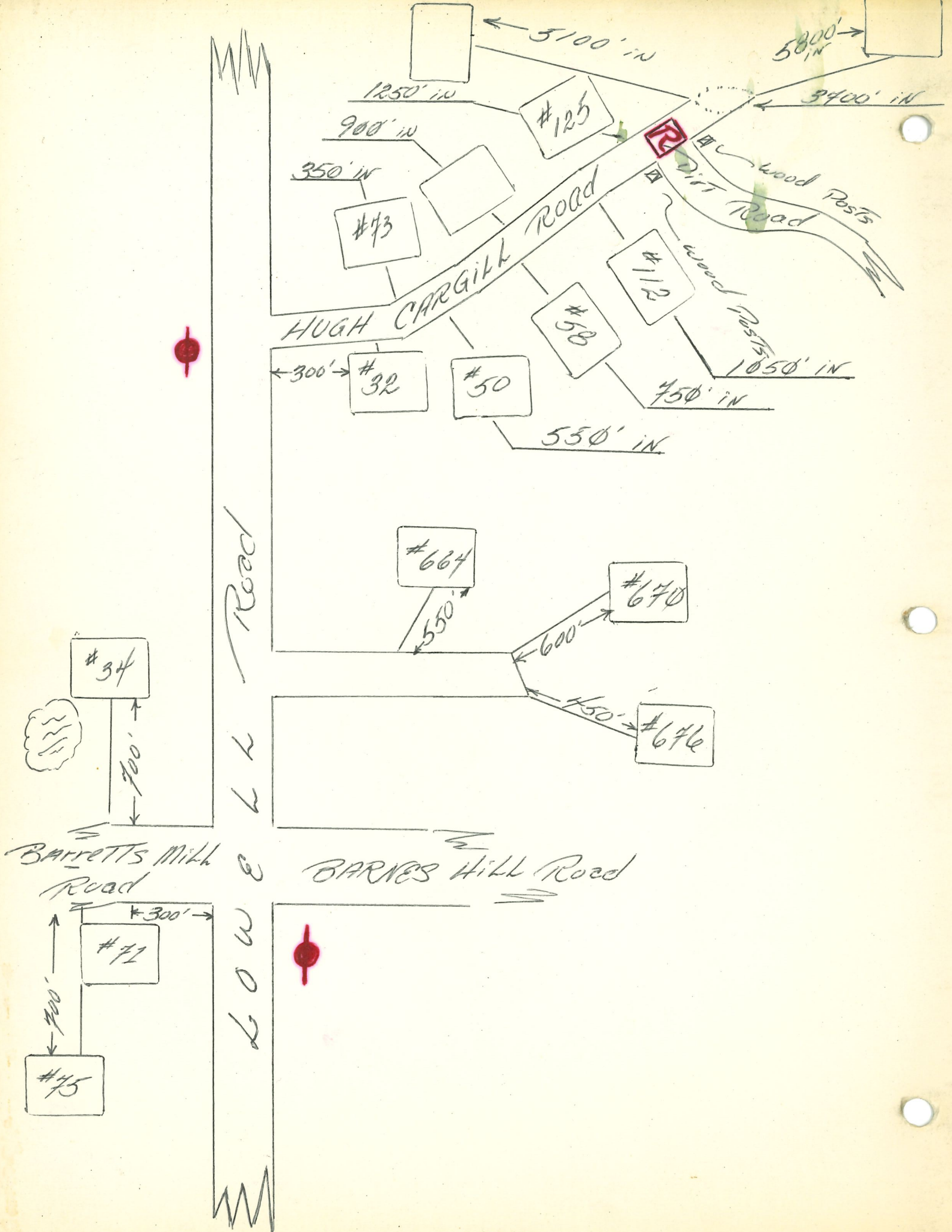
325'

#1234

FINE

MONUMENT ST.

250'



Carlisle

