

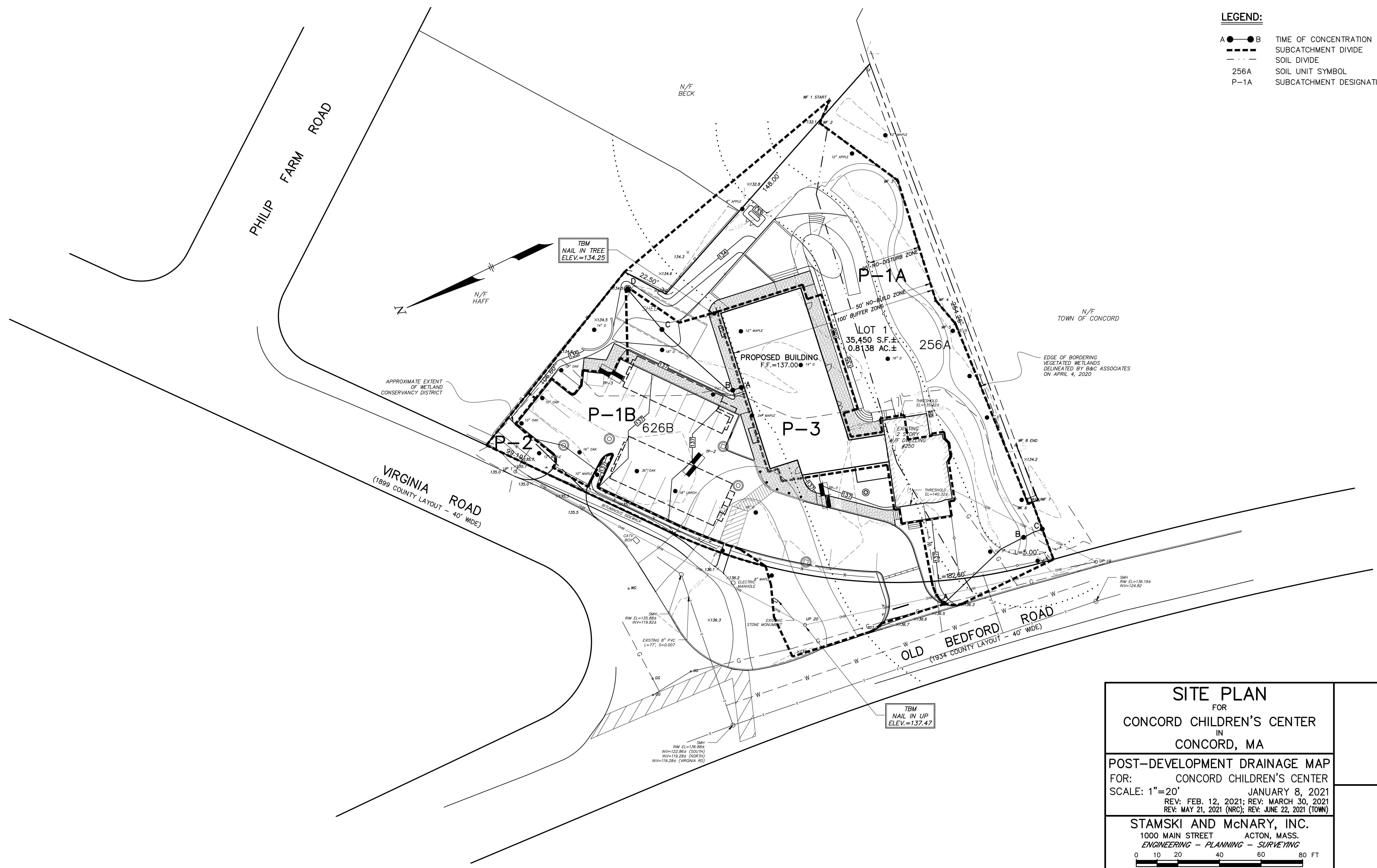
**LEGEND:**

- A ● — ● B TIME OF CONCENTRATION
- SUBCATCHMENT DIVIDE
- - - SOIL DIVIDE
- 256A SOIL UNIT SYMBOL
- E-1 SUBCATCHMENT DESIGNATION



<p><b>SITE PLAN</b> FOR <b>CONCORD CHILDREN'S CENTER</b> IN <b>CONCORD, MA</b></p>	
<p>PRE-DEVELOPMENT DRAINAGE MAP FOR: CONCORD CHILDREN'S CENTER SCALE: 1"=20'      JANUARY 8, 2021 REV: FEB. 12, 2021; REV: MARCH 30, 2021 REV: MAY 21, 2021 (NRC); REV: JUNE 22, 2021 (TOWN)</p>	
<p><b>STAMSKI AND McNARY, INC.</b> 1000 MAIN STREET      ACTON, MASS. ENGINEERING - PLANNING - SURVEYING</p>	
<p>SM-6494      (6494 SITE PLAN.I.dwg)</p>	

- LEGEND:**
- A ● — ● B TIME OF CONCENTRATION
  - SUBCATCHMENT DIVIDE
  - - - SOIL DIVIDE
  - 256A SOIL UNIT SYMBOL
  - P-1A SUBCATCHMENT DESIGNATION



**SITE PLAN**  
FOR  
**CONCORD CHILDREN'S CENTER**  
IN  
**CONCORD, MA**

POST-DEVELOPMENT DRAINAGE MAP  
FOR: CONCORD CHILDREN'S CENTER  
SCALE: 1"=20' JANUARY 8, 2021  
REV: FEB. 12, 2021; REV: MARCH 30, 2021  
REV: MAY 21, 2021 (NRC); REV: JUNE 22, 2021 (TOWN)

**STAMSKI AND McNARY, INC.**  
1000 MAIN STREET ACTON, MASS.  
ENGINEERING - PLANNING - SURVEYING

0 10 20 40 60 80 FT

SM-6494 (6494 SITE PLAN.I.dwg)