

PREPARED BY PHOTOGRAMMETRIC METHODS
 FROM AERIAL PHOTOGRAPHY OF 1960, BY
 AIR SURVEY CORPORATION
 ARLINGTON 9, VIRGINIA

SCALE: 1" = 100'

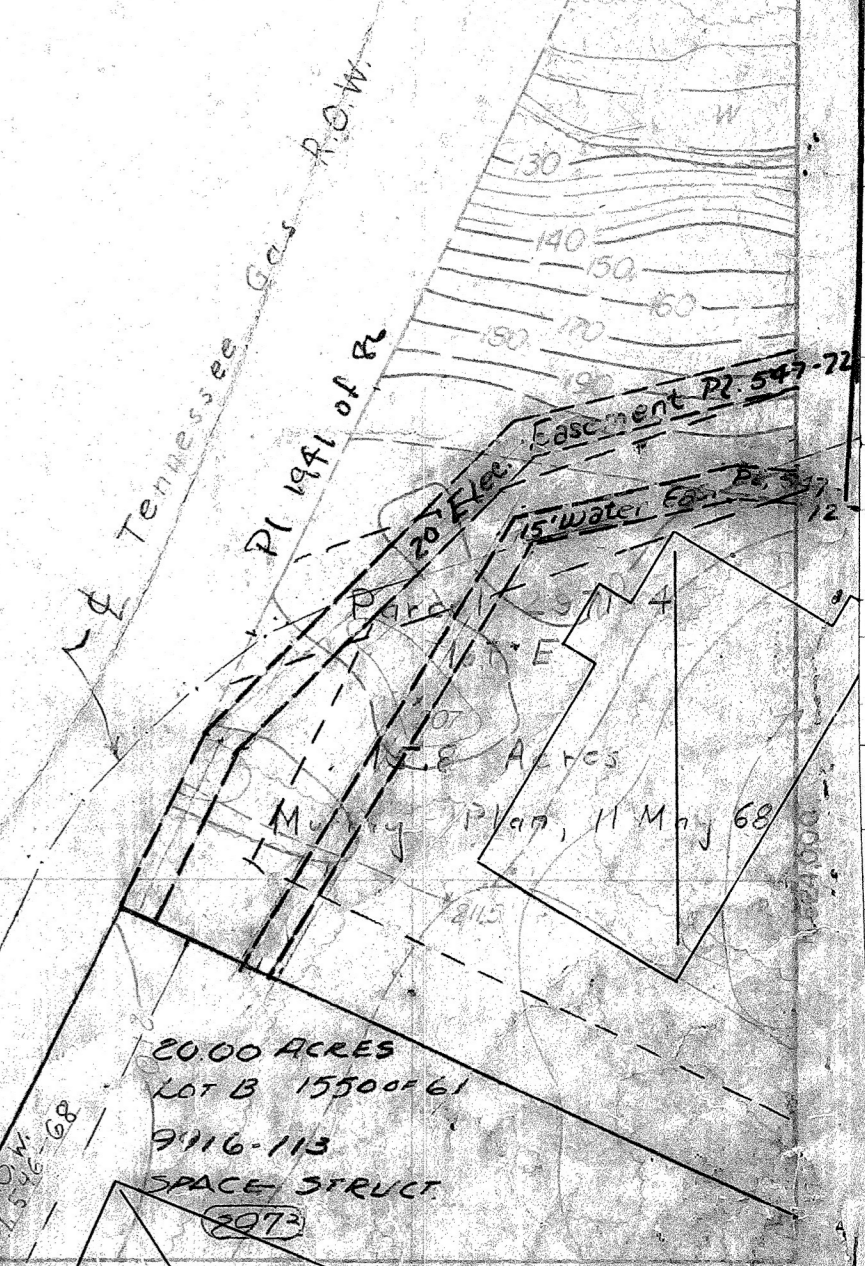


CONTOUR INTERVAL 2'

INDEX TO ADJOINING SHEETS

A10	B11
A11	B12
A12	B13

TOWN OF CONCORD
 Concord, Massachusetts



E 616,000

E 617,000

E 618,000

E 619,000

± Tennessee Gas R.O.W.

A.C.M.S.

PI 576-88
PI 576-88

SCHORFIELD
20 JUNE 60
EDISON

0.7 Acres

See

BL 11685-809

2000 ACRES
LOT B
1550 OF 61
9916-113
SPACE STES INC
(2972)

(2974)

502 s.f. (in Concord)
Boston Edison

16 ACRES + 22,250 s.f.
SUDBURY

ED 502

PL 1026-72
Total Area in Concord
.85 Acre

N 423,000

N 422,000

N 423,000

N 422,000

PREPARED BY PHOTOGRAMMETRIC METHODS
FROM AERIAL PHOTOGRAPHY OF 1960 BY

AIR SURVEY CORPORATION
ARLINGTON 9, VIRGINIA



SCALE: 1" = 100'



CONTOUR INTERVAL: 2'

DATUM IS USCG'S MEAN SEA LEVEL
500 FOOT GRID BASED ON MASSACHUSETTS COORDINATE SYSTEM

INDEX TO ADJOINING SHEETS

2972	2973
2974	2975

TOWN OF CONCORD
Concord, Massachusetts

SHEET 204