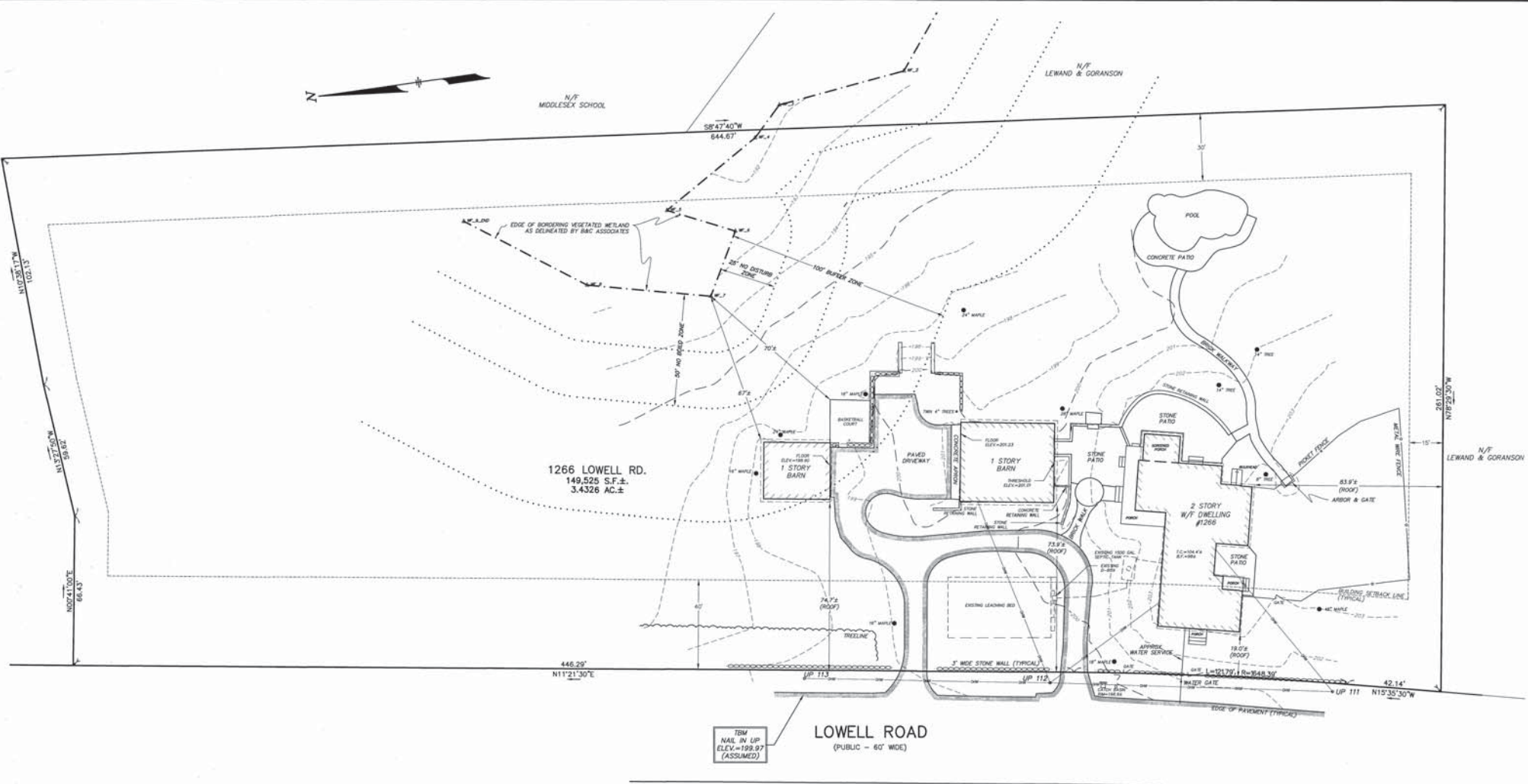




N/F
MIDDLESEX SCHOOL

N/F
LEWAND & GORANSON



1266 LOWELL RD.
149,525 S.F.±
3.4326 AC.±

LOWELL ROAD
(PUBLIC - 60' WIDE)

BM
NAE IN UP
ELEV.=199.97
(ASSUMED)

UTILITY NOTE:

ALL UNDERGROUND UTILITIES SHOWN HERE WERE COMPILED ACCORDING TO AVAILABLE RECORD PLANS FROM VARIOUS UTILITY COMPANIES AND PUBLIC AGENCIES AND ARE APPROXIMATE ONLY. ACTUAL LOCATIONS MUST BE DETERMINED IN THE FIELD BEFORE DESIGNING, EXCAVATING, BLASTING, INSTALLING, BACKFILLING, GRADING, PAVEMENT RESTORATION OR REPAIRING. ALL UTILITY COMPANIES, PUBLIC AND PRIVATE, MUST BE CONTACTED INCLUDING THOSE IN CONTROL OF UTILITIES NOT SHOWN ON THIS PLAN. SEE CHAPTER 370, ACTS OF 1963 MASS. WE ASSUME NO RESPONSIBILITY FOR DAMAGES INCURRED AS A RESULT OF UTILITIES OMITTED OR INACCURATELY SHOWN. BEFORE PLANNING FUTURE CONNECTIONS THE APPROPRIATE PUBLIC UTILITY ENGINEERING DEPARTMENT MUST BE CONSULTED. DIG SAFE TELEPHONE No. 1-888-344-7233.

RECORD OWNER

PAUL E. GRIESINGER
LEANN M. GRIESINGER
1266 LOWELL ROAD
CONCORD, MA

REFERENCE

MIDDLESEX REGISTRY OF DEEDS
NORTH DISTRICT
DEED BOOK 24944 PAGE 598
PLAN No. 85 OF 1944

ZONING DISTRICT

RESIDENCE AA - RAA

DATUM

ELEVATIONS SHOWN ON THIS PLAN REFER TO AN ASSUMED BASE.

LEGEND:

- N/F NOW OR FORMERLY
- OVERHEAD WIRES
- TREE
- TREE LINE
- UTILITY POLE
- UP GAS GATE
- GG+ GAS SERVICE (BURIED)
- WG+ WATER GATE
- WG- WATER SERVICE (BURIED)
- DMH DRAIN MANHOLE
- S SUB-SURFACE DRAIN LINE
- EXISTING CONTOUR
- EXISTING CONTOUR
- L LIGHTPOLE
- WETLAND FLAG
- SPOT ELEVATION
- STONE WALL
- EDGE OF PAVEMENT

TOPOGRAPHIC
PLAN OF LAND
IN
CONCORD, MASSACHUSETTS
(MIDDLESEX COUNTY)

FOR: GRIESINGER
SCALE: 1"=20' DECEMBER 19, 2014

STAMSKI AND MCNARY, INC.
1000 MAIN STREET ACTON, MASSACHUSETTS
ENGINEERING - PLANNING - SURVEYING

0 10 20 40 60 80 FT

(2010work2014.dwg) 1266 Lowell Rd. SM-2010