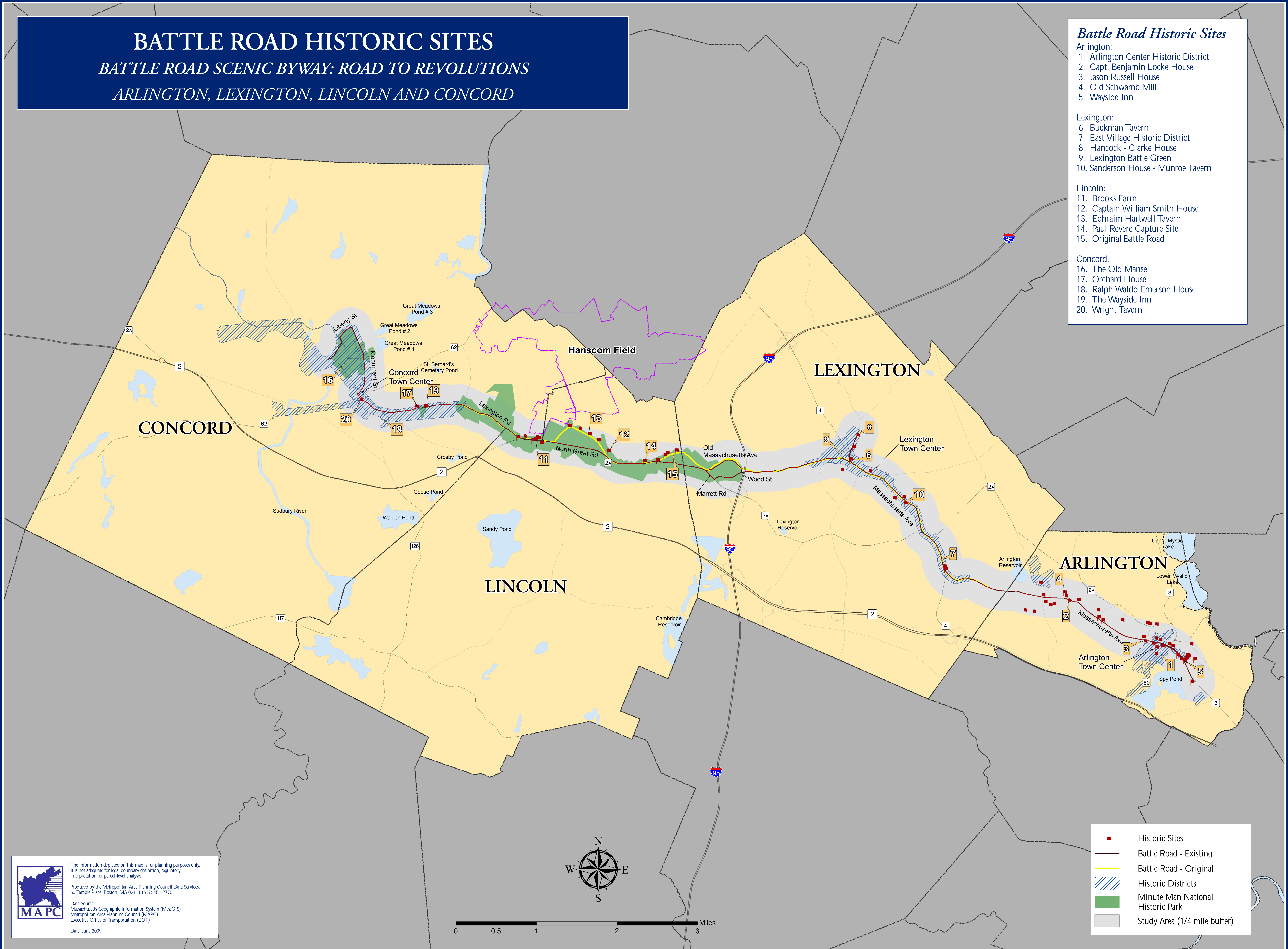


# BATTLE ROAD HISTORIC SITES

*BATTLE ROAD SCENIC BYWAY: ROAD TO REVOLUTIONS*  
*ARLINGTON, LEXINGTON, LINCOLN AND CONCORD*

### *Battle Road Historic Sites*

- Arlington:**
1. Arlington Center Historic District
  2. Capt. Benjamin Locke House
  3. Jason Russell House
  4. Old Schwamb Mill
  5. Wayside Inn
- Lexington:**
6. Buckman Tavern
  7. East Village Historic District
  8. Hancock - Clarke House
  9. Lexington Battle Green
  10. Sanderson House - Munroe Tavern
- Lincoln:**
11. Brooks Farm
  12. Captain William Smith House
  13. Ephraim Hartwell Tavern
  14. Paul Revere Capture Site
  15. Original Battle Road
- Concord:**
16. The Old Manse
  17. Orchard House
  18. Ralph Waldo Emerson House
  19. The Wayside Inn
  20. Wright Tavern

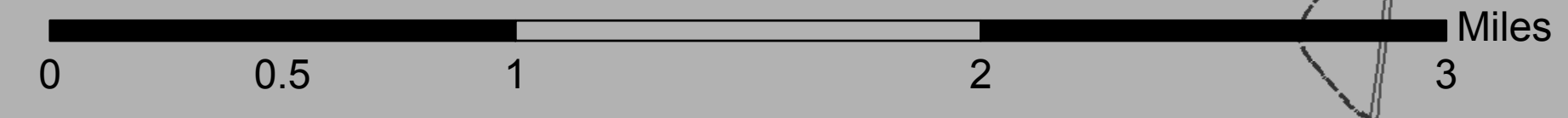
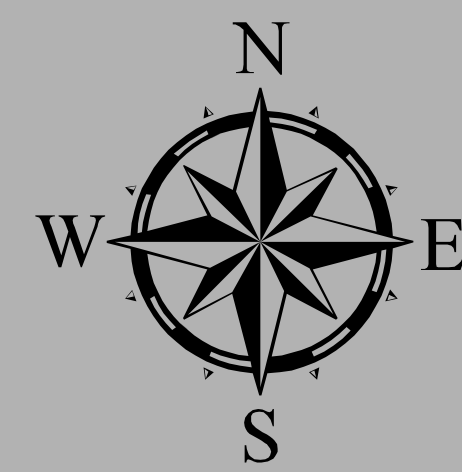


The information depicted on this map is for planning purposes only. It is not adequate for legal boundary definition, regulatory interpretation, or parcel-level analyses.

Produced by the Metropolitan Area Planning Council Data Services, 60 Temple Place, Boston, MA 02111 (617) 451-2770

Data Source:  
 Massachusetts Geographic Information System (MassGIS)  
 Metropolitan Area Planning Council (MAPC)  
 Executive Office of Transportation (EOT)

Date: June 2009



- Historic Sites
- Battle Road - Existing
- Battle Road - Original
- Historic Districts
- Minute Man National Historic Park
- Study Area (1/4 mile buffer)