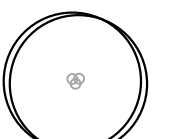
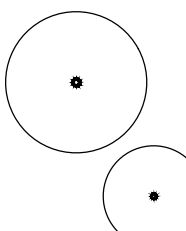
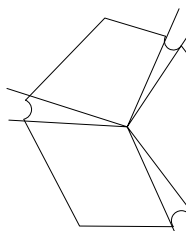
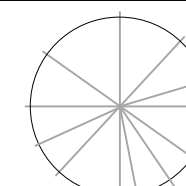
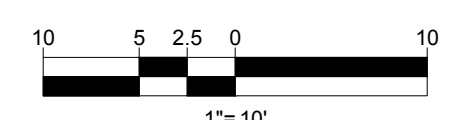
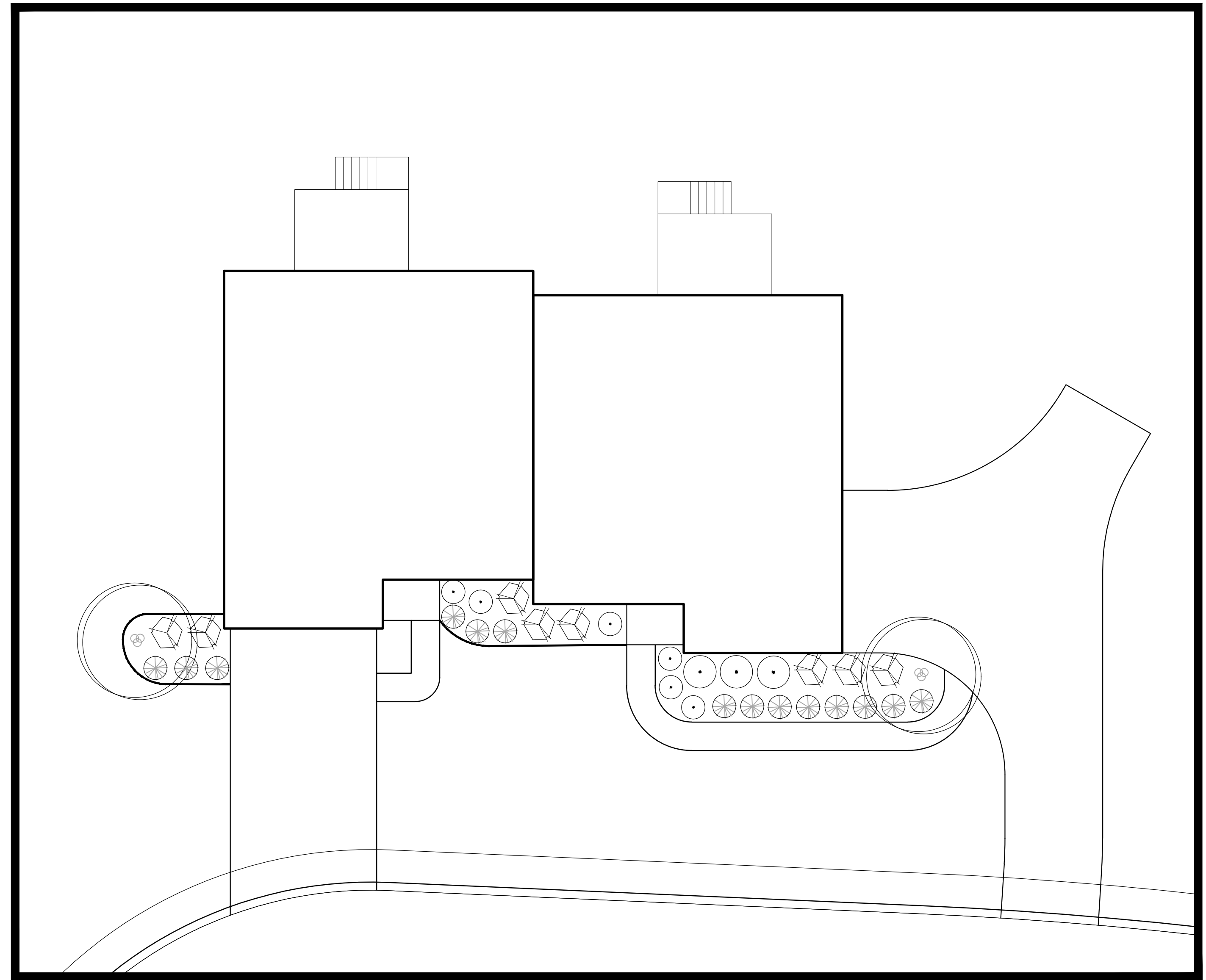
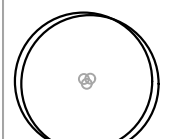
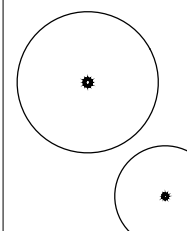
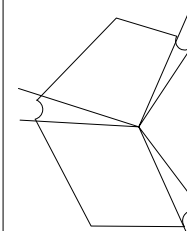
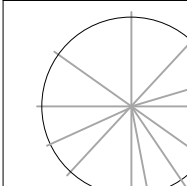


LANDSCAPE SCHEDULE				
SYM.	QTY.	ROOTS	SIZE	PLANT NAME
ORNAMENTAL TREES				
	1	B-B	2-1/2" CAL. OR 8-10" HT. (CLUMP)	OPTION A: BIRCH (JACQUEMONTI CLUMP, PAPYRIFERA), CHERRY VARIETIES (SARGENT, SAND, ACCOLADE, KOREAN, AUTUMN FLOWERING, CANADY SELECT RED), EASTERN REDBUD, THORNLESS HAWTHORN, SAUKER MAGNOLIA OPTION B: SINGLE STEM KOUSA DOGWOOD, JAPANESE TREE LILAC, PYRUS VARIETIES (BRADFORD, CLEVELAND, SELECT, REDSPIRE) SHADBLow SERVICEBERRY, STAR MAGNOLIA
DECIDUOUS SHRUBS				
	17	B-B	24-48" OR 18" SPRD.	OPTION A: AZALEA (GIBALTAR, WHITE LIGHTS), BLUEBERRY LOWBUSH, SUMMERSWEET CLETHRA, COTONEASTER VARIETIES (CORAL BEAUTY, APICULATUS, ROYAL BEAUTY), BOBO HYDRANGEA OPTION B: ARCTIC FIRE REDTWIG DOGWOOD, DWARF KOREAN LILAC, OAKLEAF HYDRANGEA, NIHO BLUE HYDRANGEA, VIBURNUM (SPICE BABY, COMPACTUM, VARS-SAB), LOWBUSH CRANBERRY, LITTLE GLOBE RED WINTERBERRY
EVERGREEN SHRUBS (LOW, COLUMNAR, STANDARD)				
	9	CONTAINER	24-48" OR 18" SPRD.	OPTION A: COLUMNAR: HICKS YEW, SPARTAN JUNIPER, GREEN GIANT ARBORVITAE (STANDARD), AZALEA (BLANKUS PINK, GRAY'S CRIMSON, DELAWARE VALLEY WHITE), DENSIFORMIS YEW, MT. FIRE ANDROMEDA, GIRARD'S RAINBOW LEUCOTHOE, RHODOENDRON (BOULD DE NEIGE, BESSE HOWELL, TRADITION) LOW: DWARF ENGLISH BOXWOOD, NANA LEUCOTHOE, ELF MT. LAUREL, RHODOENDRON (PURPLE GEM, YAKU FAIRY) OPTION B: COLUMNAR: HICKS YEW, SPARTAN JUNIPER, GREEN GIANT ARBORVITAE (STANDARD), AZALEA VARIETIES (HNO CRIMSON, STEWARTSONA, BOBBY, GIRARD'S HOT SHOT, CORNELL PINK, INBERRY, MT. FIRE ANDROMEDA, DENSIFORMIS YEW, QUIMPIC FIRE MT. LAUREL, RHODOENDRON (CHRONODES, NOVA ZEMBLA, PUM) LOW: GEM BOX INBERRY, AZALEA (BIBBY, DWARF ENCORE), NEST SPRUCE, FIRE CHIEF GLOBE ARBORVITAE
GROUND COVER				
	12	CONTAINER	2 GAL.	BEARBERRY, ELONJYMUS EMERALD GAETY, JUNIPER VARIETIES (BAR HARBOR, BLUE RUG, SARGENT) PACHYSANDRA, PERIWINKLE



LANDSCAPE SCHEDULE				
SYM.	QTY.	ROOTS	SIZE	PLANT NAME
ORNAMENTAL TREES				
	2	B-B	2-1/2" CAL. OR 8-10" HT. (CLUMP)	OPTION A: BIRCH (JACQUEMONTI CLUMP, PAPYRIFERA), CHERRY VARIETIES (SARGENT, SAND, ACCOLADE, KOREAN, AUTUMN FLOWERING, CANADY SELECT RED), EASTERN REDBUD, THORNLESS HAWTHORN, SAUKER MAGNOLIA OPTION B: SINGLE STEM KOUSA DOGWOOD, JAPANESE TREE LILAC, PYRUS VARIETIES (BRADFORD, CLEVELAND, SELECT, REDSPIRE) SHADBLow SERVICEBERRY, STAR MAGNOLIA
DECIDUOUS SHRUBS				
	9	B-B	24-48" OR 18" SPRD.	OPTION A: AZALEA (GIBALTAR, WHITE LIGHTS), BLUEBERRY LOWBUSH, SUMMERSWEET CLETHRA, COTONEASTER VARIETIES (CORAL BEAUTY, APICULATUS, ROYAL BEAUTY), BOBO HYDRANGEA OPTION B: ARCTIC FIRE REDTWIG DOGWOOD, DWARF KOREAN LILAC, OAKLEAF HYDRANGEA, NIHO BLUE HYDRANGEA, VIBURNUM (SPICE BABY, COMPACTUM, VARS-SAB), LOWBUSH CRANBERRY, LITTLE GLOBE RED WINTERBERRY
EVERGREEN SHRUBS (LOW, COLUMNAR, STANDARD)				
	8	CONTAINER	24-48" OR 18" SPRD.	OPTION A: COLUMNAR: HICKS YEW, SPARTAN JUNIPER, GREEN GIANT ARBORVITAE (STANDARD), AZALEA (BLANKUS PINK, GRAY'S CRIMSON, DELAWARE VALLEY WHITE), DENSIFORMIS YEW, MT. FIRE ANDROMEDA, GIRARD'S RAINBOW LEUCOTHOE, RHODOENDRON (BOULD DE NEIGE, BESSE HOWELL, TRADITION) LOW: DWARF ENGLISH BOXWOOD, NANA LEUCOTHOE, ELF MT. LAUREL, RHODOENDRON (PURPLE GEM, YAKU FAIRY) OPTION B: COLUMNAR: HICKS YEW, SPARTAN JUNIPER, GREEN GIANT ARBORVITAE (STANDARD), AZALEA VARIETIES (HNO CRIMSON, STEWARTSONA, BOBBY, GIRARD'S HOT SHOT, CORNELL PINK, INBERRY, MT. FIRE ANDROMEDA, DENSIFORMIS YEW, QUIMPIC FIRE MT. LAUREL, RHODOENDRON (CHRONODES, NOVA ZEMBLA, PUM) LOW: GEM BOX INBERRY, AZALEA (BIBBY, DWARF ENCORE), NEST SPRUCE, FIRE CHIEF GLOBE ARBORVITAE
GROUND COVER				
	14	CONTAINER	2 GAL.	BEARBERRY, ELONJYMUS EMERALD GAETY, JUNIPER VARIETIES (BAR HARBOR, BLUE RUG, SARGENT) PACHYSANDRA, PERIWINKLE

NOTE: PROJECT LOCATED WITHIN A ZONE II GROUNDWATER PROTECTION AREA.  
 1. ORGANIC FERTILIZERS SHALL BE USED TO LIMIT AND REDUCE THE TOTAL NITROGEN AND PHOSPHOROUS LOAD FROM THE SITE.  
 2. SNOW MANAGEMENT WILL BE LIMITED NON-HARMFUL DE-ICING MATERIALS.

**THIS PLAN TO BE UTILIZED FOR LANDSCAPE PURPOSES ONLY**

**REFER LANDSCAPE NOTES & DETAILS SHEET FOR LANDSCAPE NOTES AND DETAILS**



REVISIONS				
REV	DATE	COMMENT	DRAWN BY	CHECKED BY



PERMIT SET	
THIS DRAWING IS INTENDED FOR MUNICIPAL AND/OR AGENCY REVIEW AND APPROVAL. IT IS NOT INTENDED AS A CONSTRUCTION DOCUMENT UNLESS INDICATED OTHERWISE.	
PROJECT No.:	W201030
DRAWN BY:	RK/LC
CHECKED BY:	MM
DATE:	07/07/2022
CAD I.D.:	W201030_S53

**PROPOSED LANDSCAPE PLAN DOCUMENTS**  
 FOR  
**QUARRY NORTH ROAD LLC.**  
 PROPOSED "ROOKERY LANE" DEVELOPMENT  
 48Y FITCHBURG TURNPIKE, CONCORD, MA

**BOHLER**  
 352 TURNPIKE ROAD  
 SOUTHBOROUGH, MA 01772  
 Phone: (508) 480-9900  
 Fax: (508) 480-9080  
 www.BohlerEngineering.com

**M.J. MRVA**  
 REGISTERED LANDSCAPE ARCHITECT  
 MASSACHUSETTS No. 1217  
 RHODE ISLAND No. 419  
 NEW YORK No. 002059  
 NEW HAMPSHIRE No. 109  
 CONNECTICUT No. 1398  
 "TRAVEL SIGNATURE"

SHEET TITLE:  
**PROTOTYPICAL HOUSE LANDSCAPE PLAN**  
 SHEET NUMBER:  
**L-002**

P:\2020\2020\DRAWINGS\PLAN SETS\REV\W201030\_S53\...-LAYOUT1 - L-002-LAND PROTOTYPE