



TOWN OF CONCORD

Department of Planning and Land Management

141 Keyes Road - Concord, MA - 01742

Phone: 978-318-3290

MEMORANDUM

To: Bruce Freeman Rail Trail Advisory Committee
From: Marcia Rasmussen, Director DPLM
Re: **Update of Phases 2A, 2B, 2C, the last ½ mile of 2C, and 2D**
Date: January 25, 2023

- 1. Phase 2A – 2D Update:** The Friends of the Bruce Freeman Rail Trail, via Carlene Hempel, followed up earlier this month to reconnect with those who participated in the fall coordination meeting to determine the status of each community's conversation with town leadership concerning the proposed uniform signage along the trail and requesting follow-up from each community. The BFRTAC Co-chairs may want to provide that information to Carlene who will compile responses and provide a status report on each community, as well as send a follow-up invitation for a spring meeting to discuss logistics and next/final steps for implementation.
- 2. Phase 2B Update:** The completion date is expected to be extended to the end of May 2023 to allow installation of the cedar fence, landscaping, and top course of asphalt on the Acton portion of the trail. MDOT Resident Engineer Michael Winnick has distributed the 2022 Wildlife Culvert monitoring report, which has been added to the BFRTAC web page under the 2023 monthly updates <https://concordma.gov/1830/Monthly-Updates>.
- 3. Phase 2C Updates:** Information about the proposed short-term improvements to Junction Park is being sent to the MBTA staff this week to determine whether a formal submittal is required relative to the pavement markings and planters with screens near the commuter rail platform.

Also, an inquiry from an abutter regarding replacement of evergreen trees that were planted during the initial construction but failed to survive in the area between Powder Mill Road was submitted. I am working with BFRTAC Co-Chair, Nat Welch, and will be reaching out to CPW and other DPLM staff to determine the best action going forward.

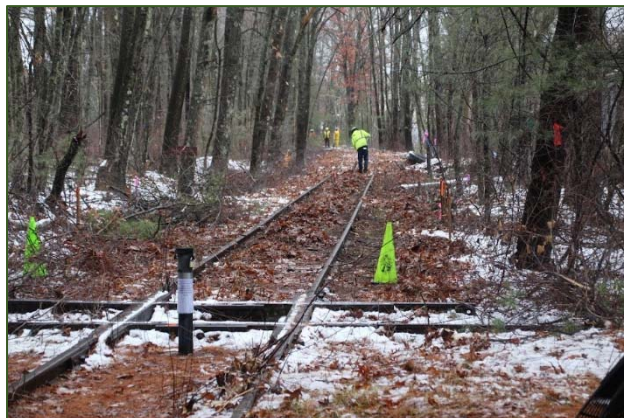
- 4. The last ½ mile of Phase 2C and Phase 2D in Sudbury:** From Sudbury Director of Planning & Community Development, Adam Duchesneau, I received the following update: "We are happy to announce that on Monday, January 23, 2023, A.A. Will Corporation and their subcontractor, Stanley Tree Service, will commence active vegetation clearing in the Bruce Freeman Rail Trail Phase 2D corridor. This activity will be the actual start of construction in the field for this rail trail project.

The initial work will commence at the southern end of the Bruce Freeman Rail Trail Phase 2D corridor near Station Road and travel northward. The early stages of this work will include vegetation clearing, including invasive species removal, and chipping within the project's limit of work in the corridor. This activity will be followed by the installation of erosion control measures,

and then the removal of rails and ties in the coming weeks. Grading of the limits of work will begin afterward.

The Planning & Community Development Department intends to post periodic project updates to this page on the Town's website. Additionally, the Planning & Community Development Department has created a Bruce Freeman Rail Trail Project Updates email list where periodic updates will be pushed out to interested parties. If you or someone you know would like to join this email list (or be removed from it), please email the Planning & Community Development Department at PCD@sudbury.ma.us."

And from Sudbury resident, Len Simon:
"Construction of the BFRT in Sudbury has begun! Ten years of advocacy at the state level and at municipal committees, forums, and town meetings has finally produced a tangible result. The photo (right) shows the dream is becoming a reality, taken on Monday, January 23, 2023, the first day of construction of the Bruce Freeman Rail Trail in Sudbury.



The grubbing started at the diamond just north of Route 20 - where the BFRT will intersect with the Mass and will progress north to Powder Mill Road in Concord. The diamond is clearly visible in the photos. Although it is years away, the next steps are extension of the BFRT down to and across Route 20, then the remaining 1.1 miles in Sudbury to the Framingham line, and finally through Framingham."