



Date: August 21, 2025
To: Municipal Light Board: Warren Leon, John Dalton, Brian Foulds, Bianca Taylor and Chris Schaffner
From: Jason Bulger, CMLP Director
Subject: Agenda for virtual Light Board meeting on **Tue., August 26, 2025, at 7:30 A.M.** (link below)

7:30 AM 1. **Call to Order**

7:30 AM 2. **Meetings and Minutes** 5 Minutes Chair Information
 Upcoming Meetings:
 Sep 10, 2025; Oct 8, 2025; **Oct 22, 2025***; Nov 12, 2025; **Nov 24, 2025***; Dec 10, 2025
 *Not officially scheduled, but we may need second meetings in October and November.

7:35 AM 3. **Net Metering Valuation under New (TOD) rate** 75 Minutes Asst. Dir. Discussion

Background: The cost-of-service study (COSS) consultant hired to help CMLP develop a default opt-out time-of-use rate for residential customers has proposed a net metering with banking rate that differs from the current one.

Purpose: CMLP staff will review the value of solar rate proposed by Utility Financial Solutions (UFS) and answer questions from the Board and the public about the new rate.

8:50 AM 8. **Liaison & Public Comments** 10 Minutes Chair Information

9:00 AM 10. **Adjourn**

Distribution: Select Board (1 copy)

Kerry Lafleur	Joe Repoff	Laura Scott	Nan Okarma
Dale Hartling	Cameron McKennitt	Don Kupka	

Join Zoom Meeting

<https://us02web.zoom.us/j/88670688880?pwd=7Vz4OiNSIDHfqUtOpWusCRHHbPA4M9.1>

Meeting ID: 886 7068 8880

Passcode: 460384

Link to view recordings of previous Light Board Meetings:

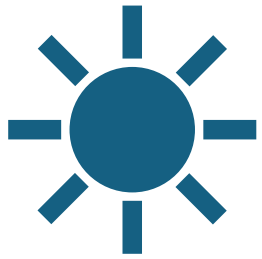
<https://www.youtube.com/playlist?list=PL1TTzrWEKOOon0RIJ2MdE2SnNZMWYeoeat>

Link to view the Director's Updates (in meeting packets):

<https://concordma.gov/1106/Municipal-Light-Board>

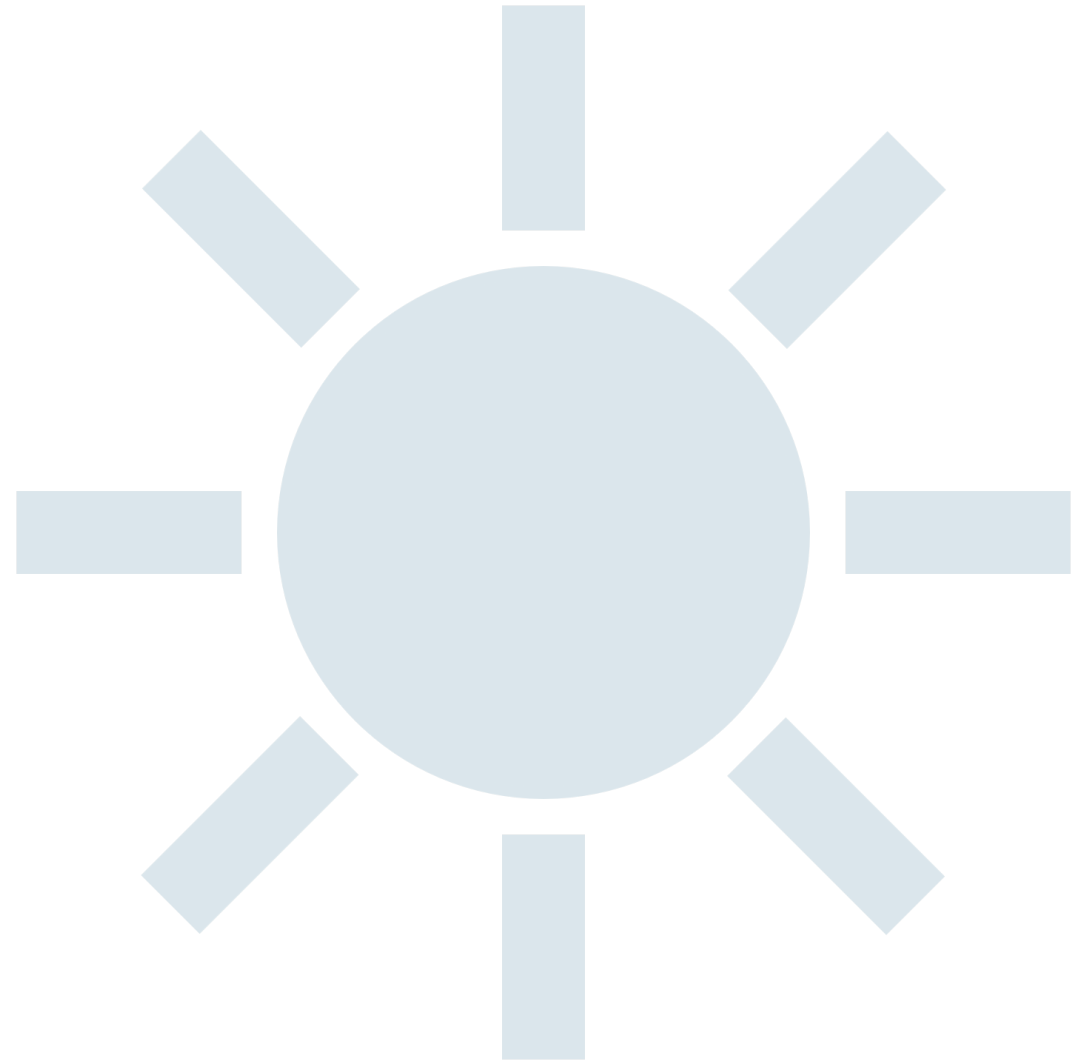
Link to view the Broadband Monthly Updates:

<https://www.concordma.gov/3148/Monthly-Updates>



2026 Rates Including Solar Rate Design

August 26, 2025
Light Board Meeting



Value of Solar (VOS) Annual, TOD

Historical Wholesale Energy Price

Months	Annual Rolling Average (\$/kWh)
60	\$0.059
48	\$0.063
36	\$0.065
24	\$0.047
12	\$0.054

Total Distribution Adder	\$0.12530
Distribution	\$0.08145
Over Market	\$0.03348
RECs	\$0.01038

Solar Compensation = Energy, Transmission , Capacity

TOD Period	\$/kWh
Standard On-Peak	\$0.35455
Standard Off-Peak	\$0.05806
Standard Super Off-Peak	\$0.04860
Shoulder on-Peak	\$0.20647
Shoulder Off-Peak	\$0.05200
Shoulder Super Off-Peak	\$0.03441

2

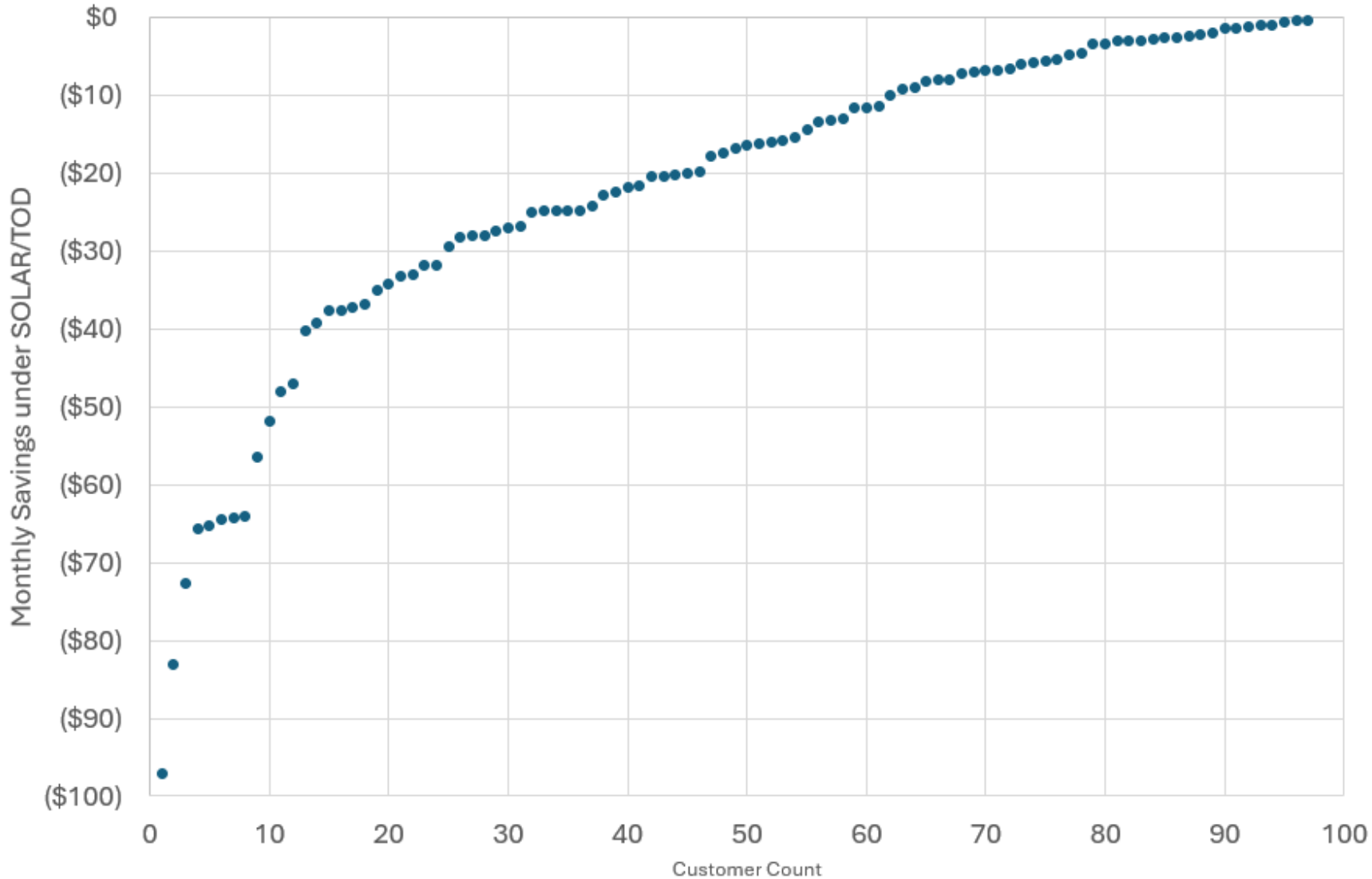


**CONCORD MUNICIPAL
LIGHT PLANT**
ELECTRIC | BROADBAND | ENERGY MANAGEMENT

We're here to serve you

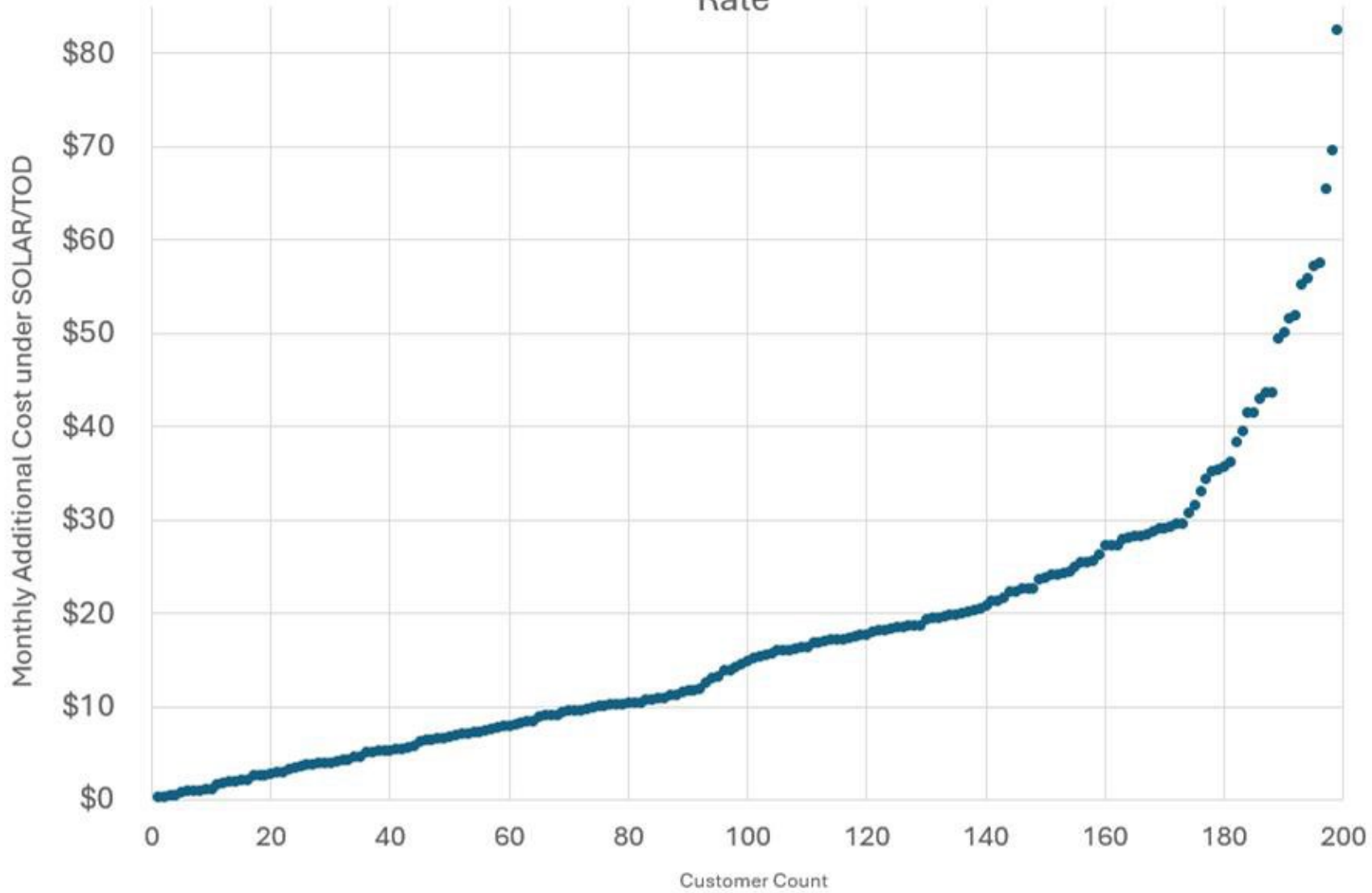


Solar Customers Who Will **Save** under the Proposed SOLAR/TOD Rate



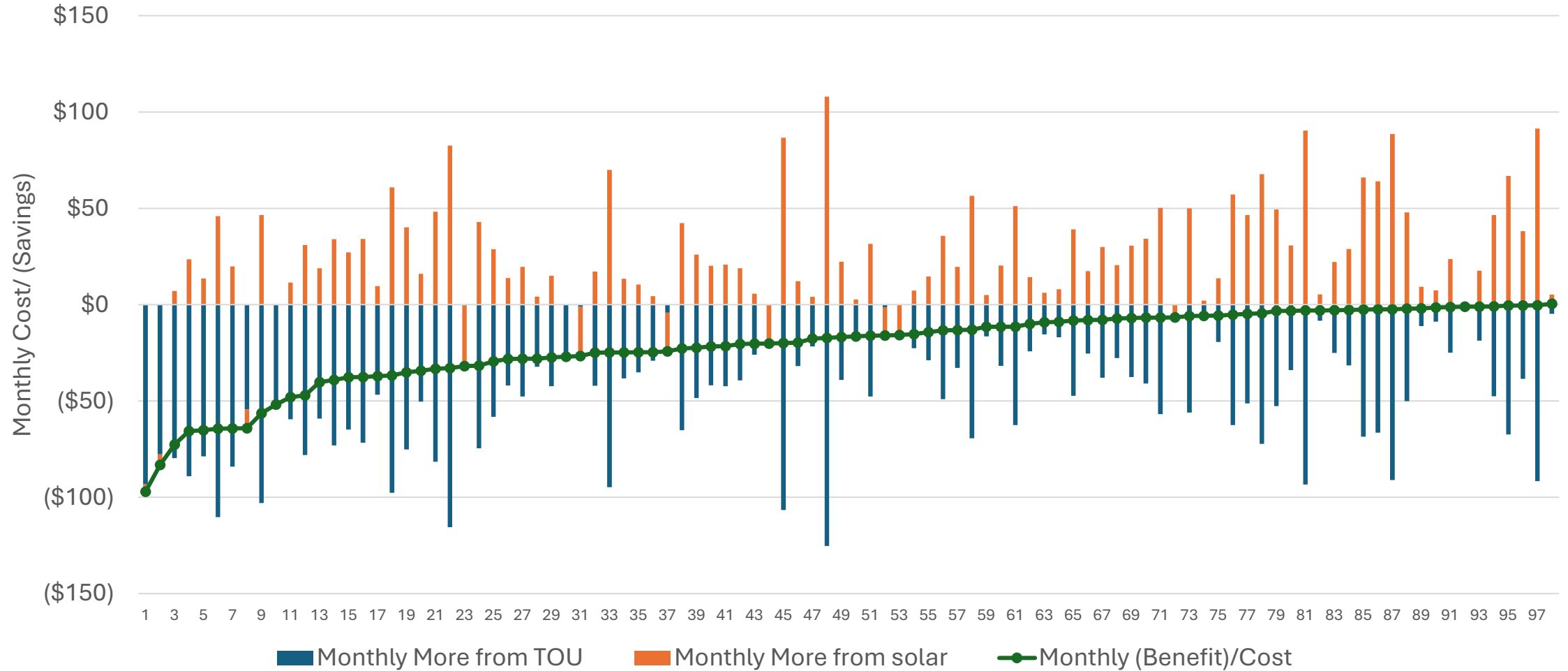
- Distribution rate = \$0.1253/kWh
- Impacts vary significantly from savings \$0.33 per month to saving \$97.13 per month
- % of customers saving = 33%

Solar Customers Who Will **Pay More** under the Proposed SOLAR/TOD Rate



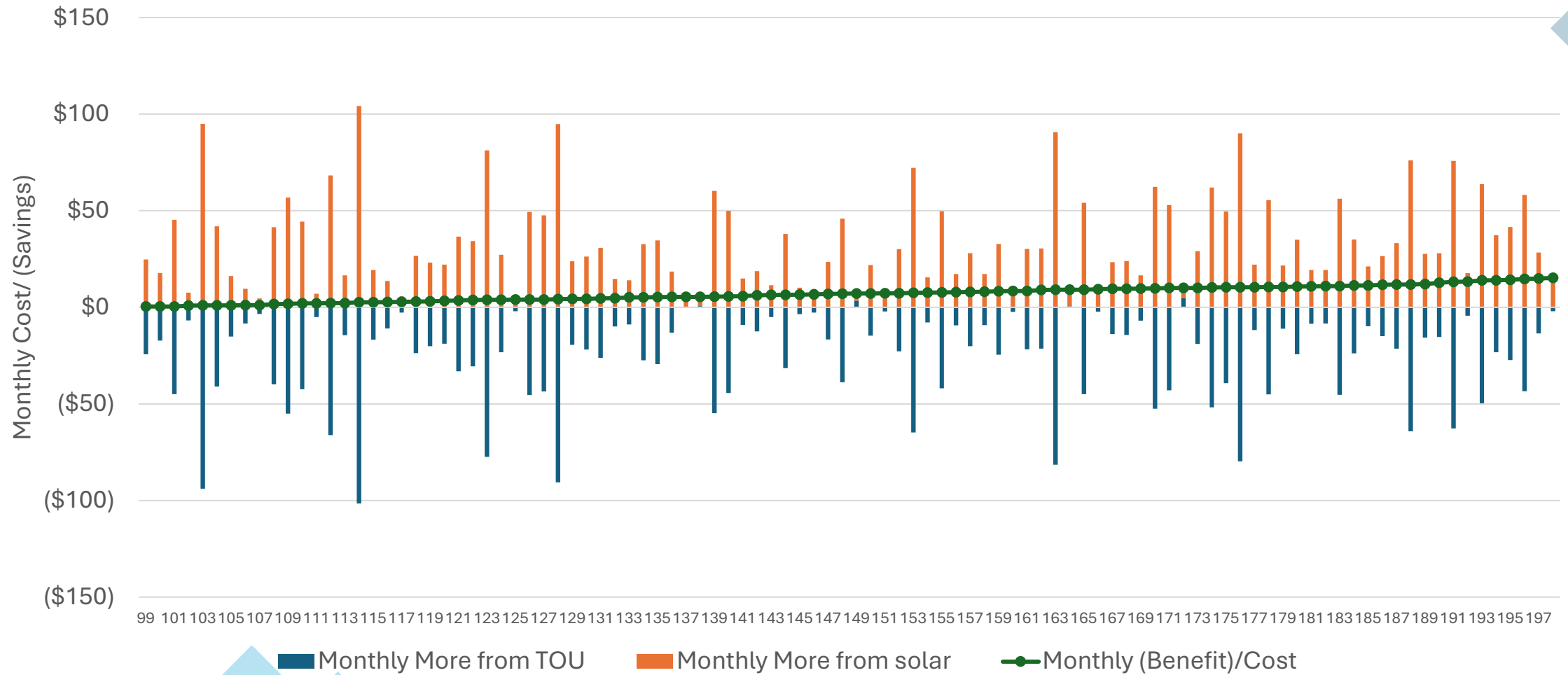
- Distribution rate = \$0.1253/kWh
- Impacts vary significantly from paying \$0.43 per month to paying \$82.59 per month
- % of customers paying more = 67%

Monthly Cost/ (Savings) from VOS Customers 1-98



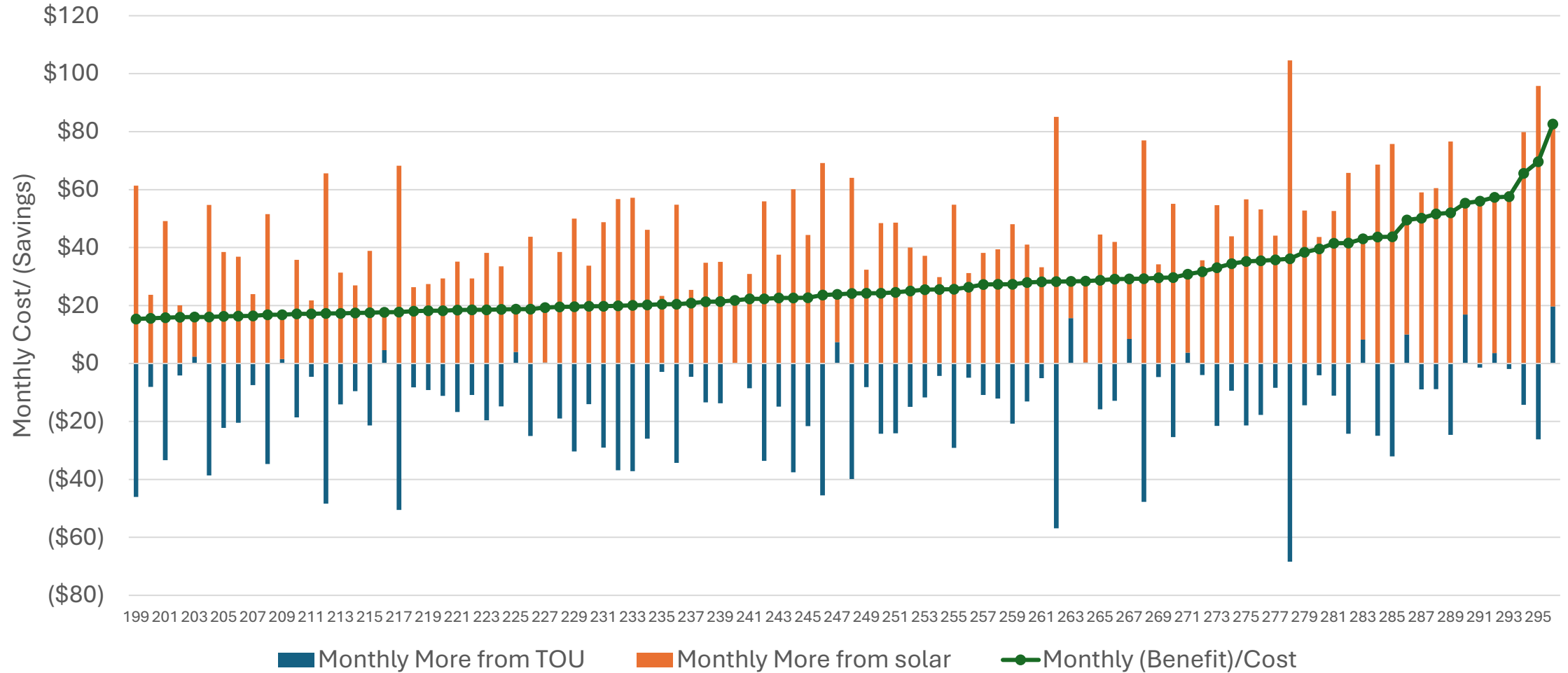
Monthly Cost/ (Savings) from VOS

Customers 99-198



Monthly Cost/ (Savings) from VOS

Customers 199-296



Concord Municipal Light & Power
Solar TOD Rate Development Summary

Match Count of Increase and Decrease				2026 TOD Delivered (Received = Delivered - Adder)				COSTOD Delivered (Received = Delivered - Adder)												
Solar Adder	\$	0.1027		Solar Adder	\$	0.1253		Solar Adder	\$	0.1253										
Rates:				Rates:				Rates:												
		Received				Received				Received										
Shoulder Off-Peak	\$	0.0746		Shoulder Off-Peak	\$	0.0770		Shoulder Off-Peak	\$	0.0520										
Shoulder Super Off-Peak	\$	0.0570		Shoulder Super Off-Peak	\$	0.0711		Shoulder Super Off-Peak	\$	0.0344										
Shoulder On-Peak	\$	0.2290		Shoulder On-Peak	\$	0.1285		Shoulder On-Peak	\$	0.2065										
Standard Off-Peak	\$	0.0806		Standard Off-Peak	\$	0.0790		Standard Off-Peak	\$	0.0581										
Standard Super Off-Peak	\$	0.0712		Standard Super Off-Peak	\$	0.0759		Standard Super Off-Peak	\$	0.0486										
Standard On-Peak	\$	0.3771		Standard On-Peak	\$	0.1778		Standard On-Peak	\$	0.3545										
		Delivered				Delivered				Delivered										
Shoulder Off-Peak	\$	0.1773		Shoulder Off-Peak	\$	0.2023		Shoulder Off-Peak	\$	0.1773										
Shoulder Super Off-Peak	\$	0.1597		Shoulder Super Off-Peak	\$	0.1964		Shoulder Super Off-Peak	\$	0.1597										
Shoulder On-Peak	\$	0.3318		Shoulder On-Peak	\$	0.2538		Shoulder On-Peak	\$	0.3318										
Standard Off-Peak	\$	0.1834		Standard Off-Peak	\$	0.2043		Standard Off-Peak	\$	0.1834										
Standard Super Off-Peak	\$	0.1739		Standard Super Off-Peak	\$	0.2012		Standard Super Off-Peak	\$	0.1739										
Standard On-Peak	\$	0.4798		Standard On-Peak	\$	0.3032		Standard On-Peak	\$	0.4798										
			Annual				Annual				Annual									
			Average	Max			Average	Max			Average	Max								
Sample		296	\$	(42.87)	Sample		296	\$	171.36	Sample		296	\$	54.66						
Increase		148	\$	161.11	\$	811.42	Increase		231	\$	274.23	\$	1,050.61	Increase		199	\$	208.87	\$	991.11
Decrease		148	\$	(246.85)	\$(1,182.90)	Decrease		65	\$	(194.24)	\$(1,024.44)	Decrease		97	\$	(261.72)	\$(1,165.56)			